

## SESC Technical Drawing

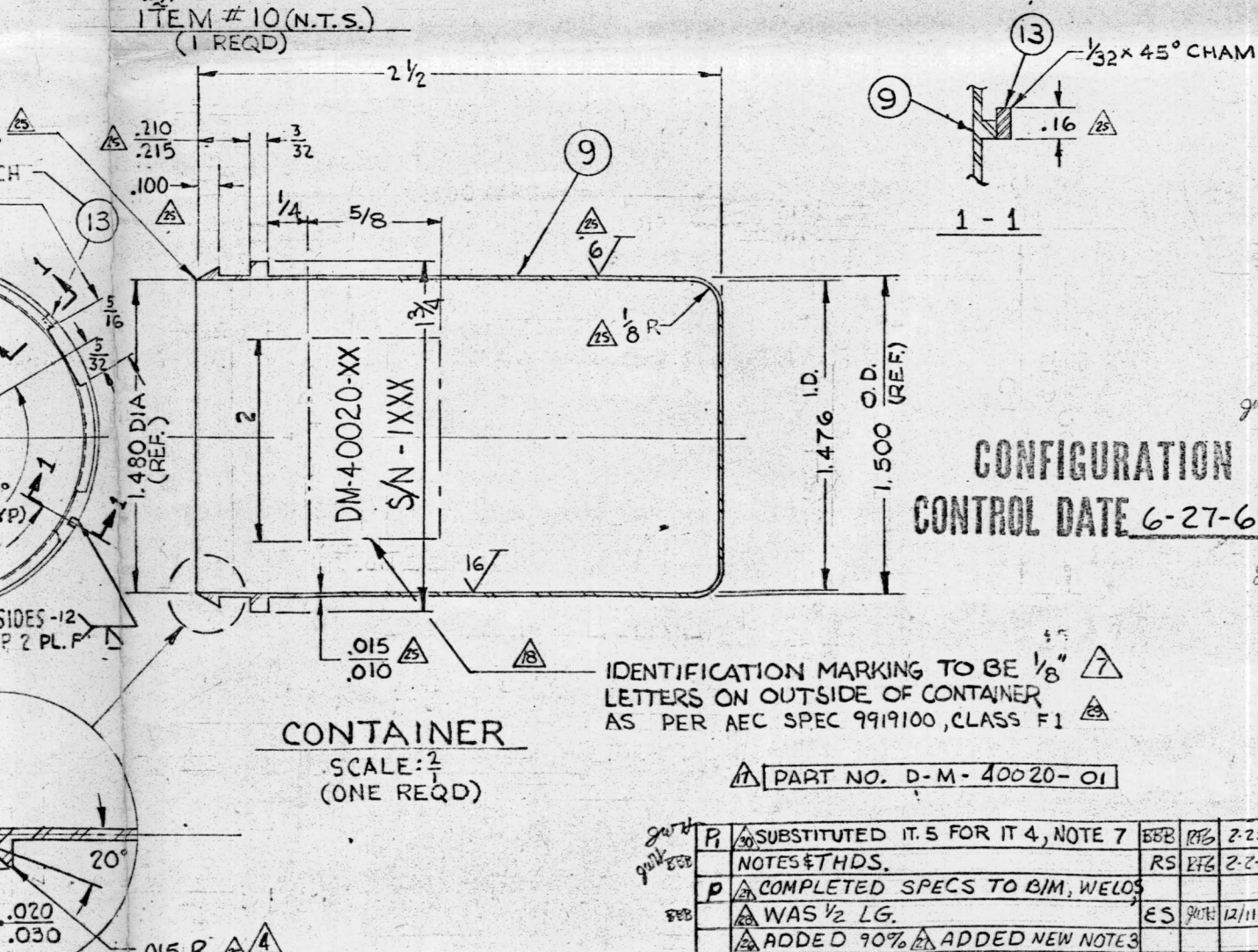
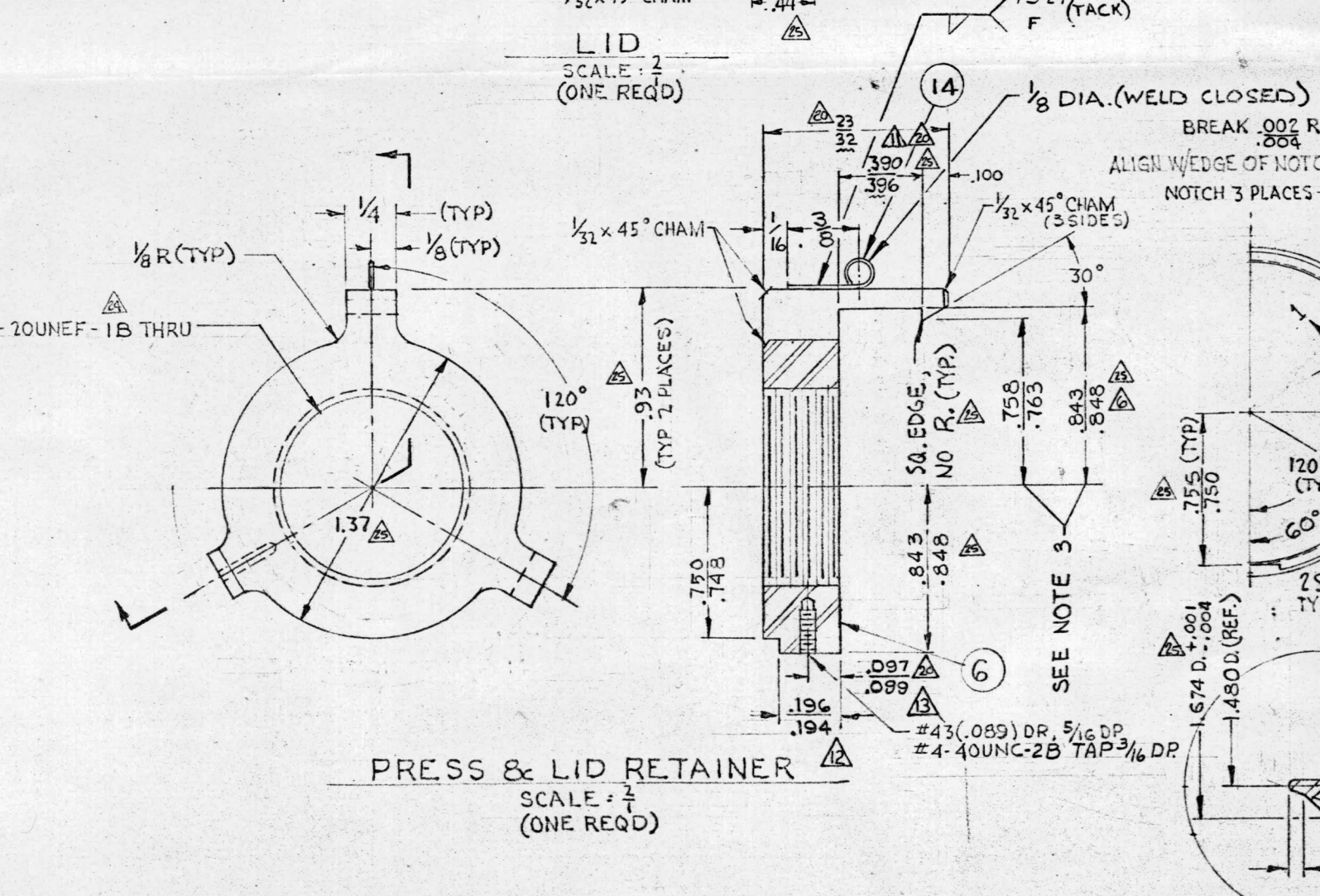
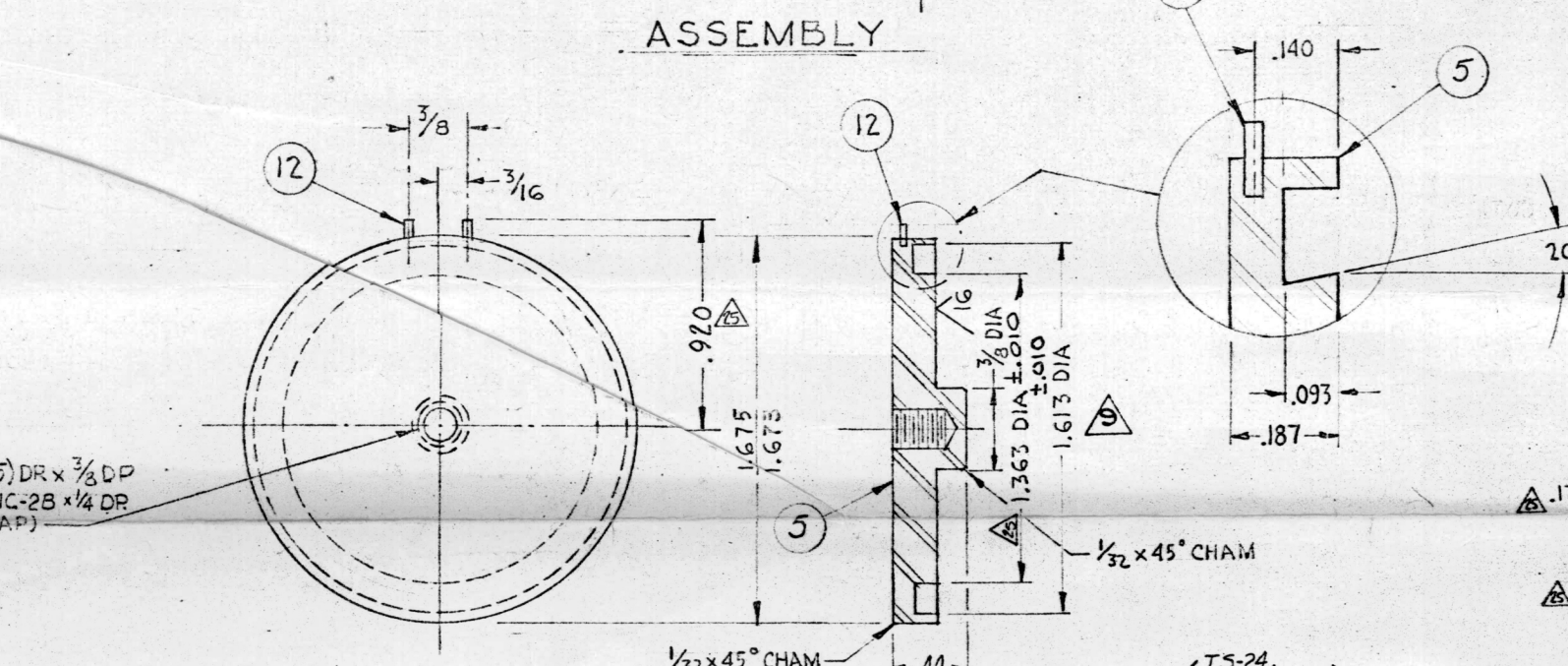
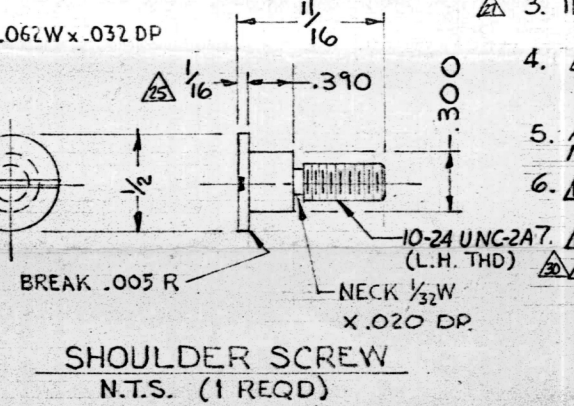
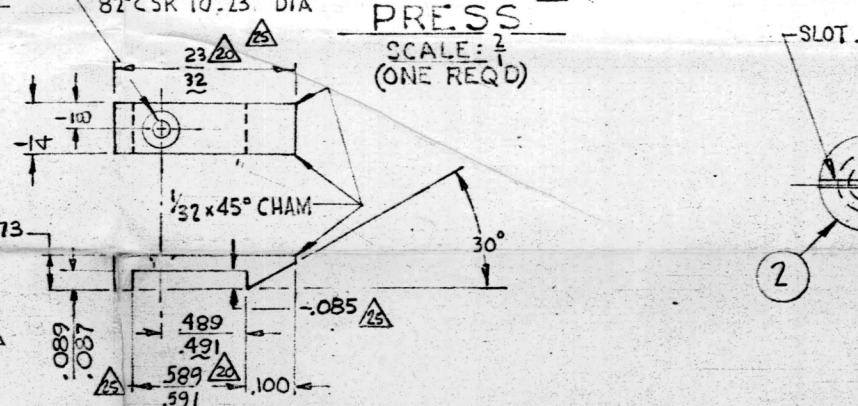
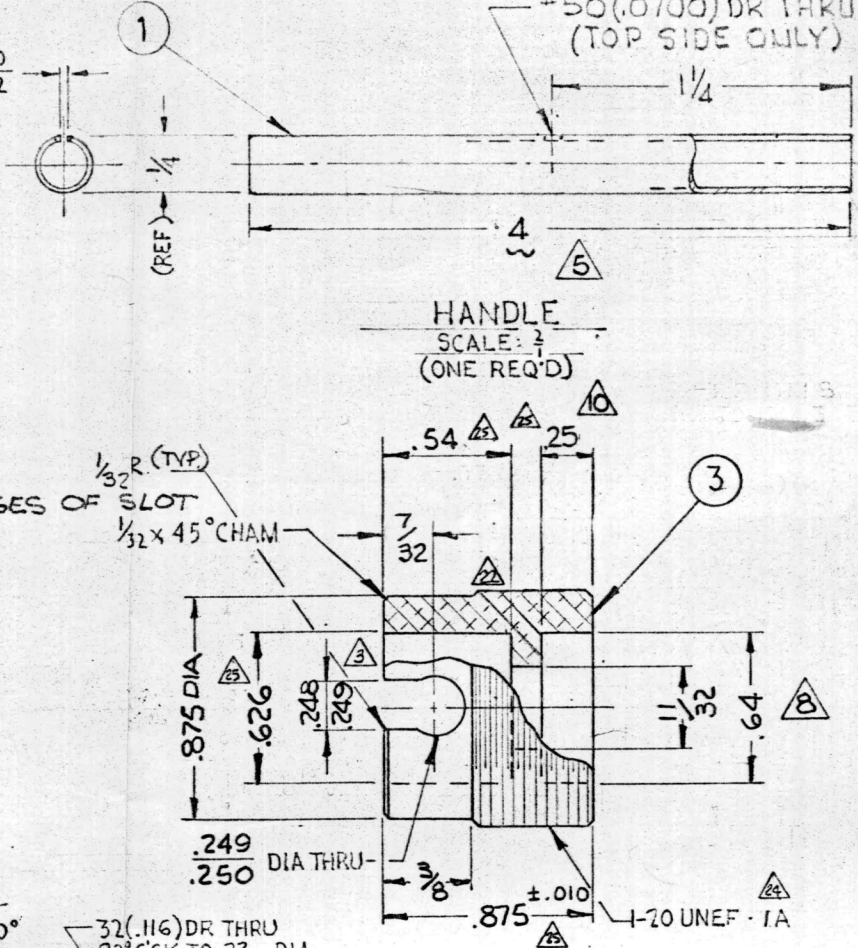
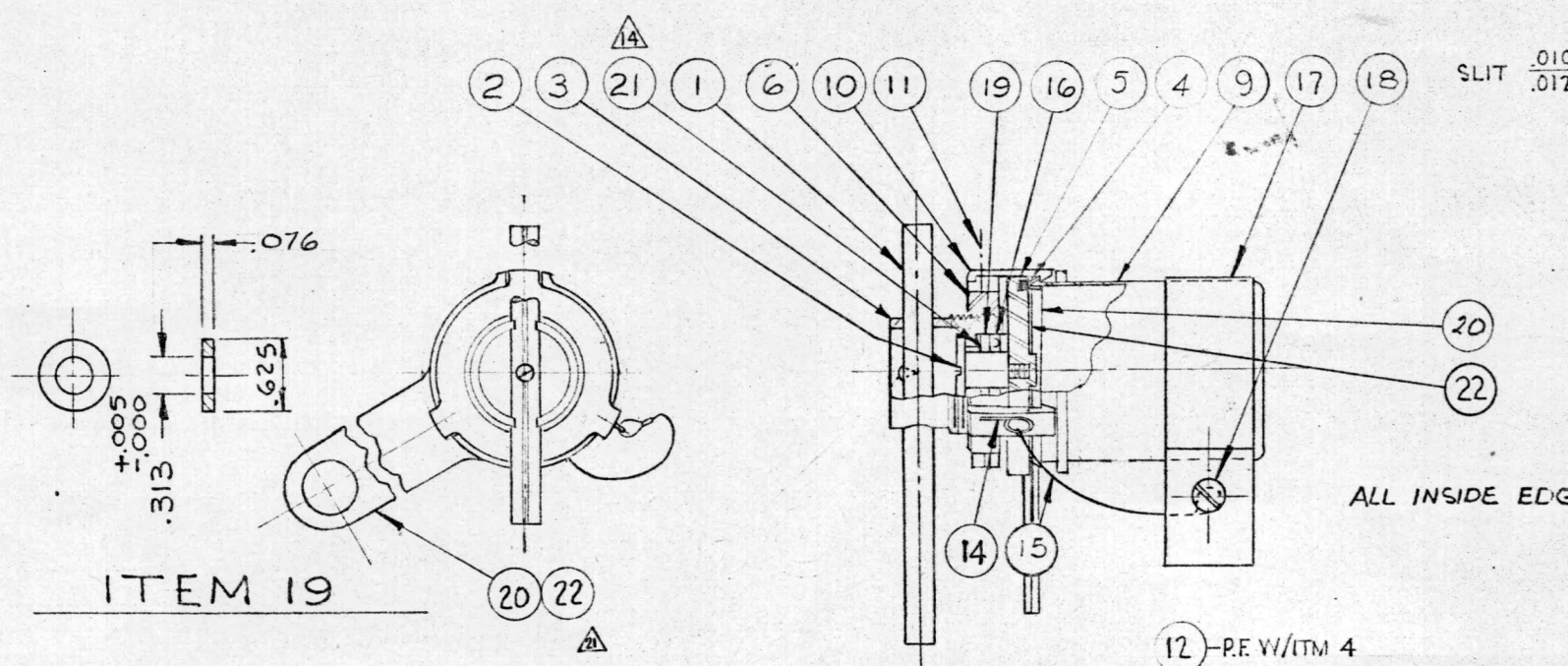
NOTE: This archival drawing was generated prior to 2/25/1970 and is suitable for reference only. It depicts sampling hardware which has been exhibited to the public since that time.

D-M – 40020\_2-25-70



ITEM	QTY	DESCRIPTION	ITEM	QTY	DESCRIPTION
1	1	1/4 O.D. x .032 WALL x 2 1/2 LG S.S. TUBE - ASTM A276	12	2	.045 DIA x 3/16 LG, 308 S.S., ASTM A276
2	1	1/2 DIA BAR - 304 S.S. ASTM A276	13	2	.062 SQ x .156 LG, 304L S.S. ASTM A276
3	1	1 IN. DIA. x 1 LG AL BAR, TYPE 6061-T6 ASTM B 211	14	1	.030 DIA TYPE 308 S.S. WIRE MIL-E-49933
4	AR	INDIUM SILVER ALLOY, IN-10%AG, 99.99% PURE	15	1	1/4 DIA. S.S. WIRE 3 LG. MCMASTER CARR # 3458X
5	1	1/2 THK R-SS 304 L-ASTM A167	16	1	THRUST BERG. BOST. GEAR # SA0-8 ASTM A276
6	1	1 THK R-SS 304 L-ASTM A167	17	1	CLAMP
7	1	2 TYPE B, RD HD, THD FORMING SCR, S.S. ASTM A276	18	1	1/4-32 UNC PAN HD BOLT 3/8 LG, S.S. ASTM A276
8			19	2	THRUST WASHER, 17-4 PH. SS, 40-44 RC AMS 5643
9	1	1 3/4 DIA BAR, 304L S.S. ASTM A276	20	1	SEAL PROTECTOR
10	1	1/4 SQ BAR - S.S. 304L ASTM A276	21	1	BELLEVILLE WASH. SPG. STL, SAE 1075, .625 O.D. x .317 I.D. x .042 HT. WALLACE BARNES
11	1	#4-40 UNC x 3/4 LG F. HD SCREW ASTM A276			* 625-22, ASSOCIATED SPRING CORP.

(8-15-69)  
 ALL FUTURE FABRICATIONS WILL OMIT IT. 8  
 \* 3/16 LOOP WELDED CLOSED END WHEN ASSY TO ITEM 14.  
 MIL-W-5693C  
 \*\* SEE NOTE 6



NOTES:

- OVERALL FIN 32 OR BETTER, EXCEPT AS NOTED.
- TOLERANCES UNLESS OTHERWISE SPECIFIED:  
 FRACTIONS ± 1/64 DECIMALS ± .005 ANGLES ± 5'  
 BREAK ALL SHARP EDGES, .010-.030 R
- INSPECT AS DIAMETERS, 1.521 & 1.691 RESP
- 
- AL ANODIZE OUTER SURFACES OF ITEM 3 AS PER MIL-A-8625 TYPE 2, CLASS 1.
- ITEM 21 TO BE NICKEL PLATED AS PER PROCESS STD. 9902105, .001-.002 THK POLISH FINISH ON 90% OF OUTER SURFACE OF ITEMS 1, 5, 6, 9, 10, 17 OR BETTER.

REV	DESCRIPTION	BY	APP	DATE
1	ISSUED	JNA	RFG	12-4-68
2	ADDED NOTE CONCERNING IT. 8	JRM	RFG	8-20-69
3	OMITTED IT. 8	JRM	RFG	7/29/69
4	ADDED LID PROTECTOR, IT. 22	JRM	RFG	8/12/69
5	LENGTHENED LEGS 1/32, IT. 6 & 10	JNA	RFG	5-9-69
6	ADDED NEW NOTE 6	JNA	RFG	4-14-69
7	ADDED PART NO. CHANGED IDENTIFICATION MARKING	JNA	RFG	4-14-69
8	NOTE 7	JNA	RFG	12-2-68
9	REMOVED NOTE 6 CHANGED	JNA	RFG	
10	ADDED ITEM. 21	JNA	RFG	
11	WAS .210 WAS .217	JNA	RFG	
12	WAS .640 WAS .640	JNA	RFG	
13	ADDED TOLERANCE	JNA	RFG	9-18-68
14	WAS 1/4	JNA	RFG	8-17-68
15	ADDED IDENTIFICATION MARKING	JNA	RFG	12/2/68
16	APP. CONF. CONTROL	JNA	RFG	12/2/68
17	WAS .210 WAS .217	JNA	RFG	5-1-68
18	WAS 2 1/2	JNA	RFG	12/2/67
19	WAS .247 WAS .247	JNA	RFG	
20	ADDED .002 FLAT	JNA	RFG	
21	ADDED ITEM'S 17, 18 & 19	JNA	RFG	
22	ADDED NOTES 5, 6, & 7	JNA	RFG	
23	GEN. REVISION	JNA	RFG	9/12/67
24	GENERAL REVISION	HGT	RFG	9/12/67
25	GENERAL REV	DNB	RFG	1/25/67
26	REV ISSUE	JNA	RFG	11/17/67

CONFIGURATION CONTROL DATE 6-27-69

IDENTIFICATION MARKING TO BE 1/8" LETTERS ON OUTSIDE OF CONTAINER AS PER AEC SPEC 9919100, CLASS F1

PART NO. D-M-40020-01

REV	DESCRIPTION	BY	APP	DATE
P	SUBSTITUTED IT. 5 FOR IT 4, NOTE 7	RFG	RFG	2-25-70
Q	NOTES & THDS.	RFG	RFG	2-2-70
R	COMPLETED SPECS TO B/M, WELDS	ES	RFG	12/11/69
S	WAS 1/2 LG.			
T	ADDED 90% ADDED NEW NOTES			
U	CHANGED TOL. 29 PLACES			

UNION CARBIDE CORPORATION		Y-12 PLANT	
NUCLEAR DIVISION		OAK RIDGE, TENNESSEE	
AL SRC			
SPEC GAS ANAL CONTAINER			
CODE TITLE - 28 SPACES		TYPE	
3 ME U	SCALE: FULL & NOTED	SHEET OF	
8-1953-71	BLOC.	PL/SHOP	D-M-40020 P1

MICROFILMED