

12020
Olivine Basalt
312 grams



Figure 1: Photo of 12020. Scale in cm. NASA # S70-43639.

Introduction

12020 is an olivine basalt with large rounded olivine phenocrysts and elongate pyroxene crystals set in a variolitic groundmass of thin clinopyroxene and plagioclase laths (figure 2). It had one large zap pit on one surface.

Petrography

Klein et al. (1971) describe 12020 as a “medium-grained olivine microgabbro consisting mainly of clinopyroxene, plagioclase and olivine. The clinopyroxene occurs as subhedral laths, up to several mm in length, as smaller anhedral grains, and as very thin, lathlike, crystals interleathed with plagioclase laths.”



Figure 2: Photomicrograph of thin section 12020,13 illustrating round olivine and elongate pyroxene phenocrysts with variolitic intergrowths of plagioclase and pyroxene needles. NASA S70-30254. Field of view about 2 cm.

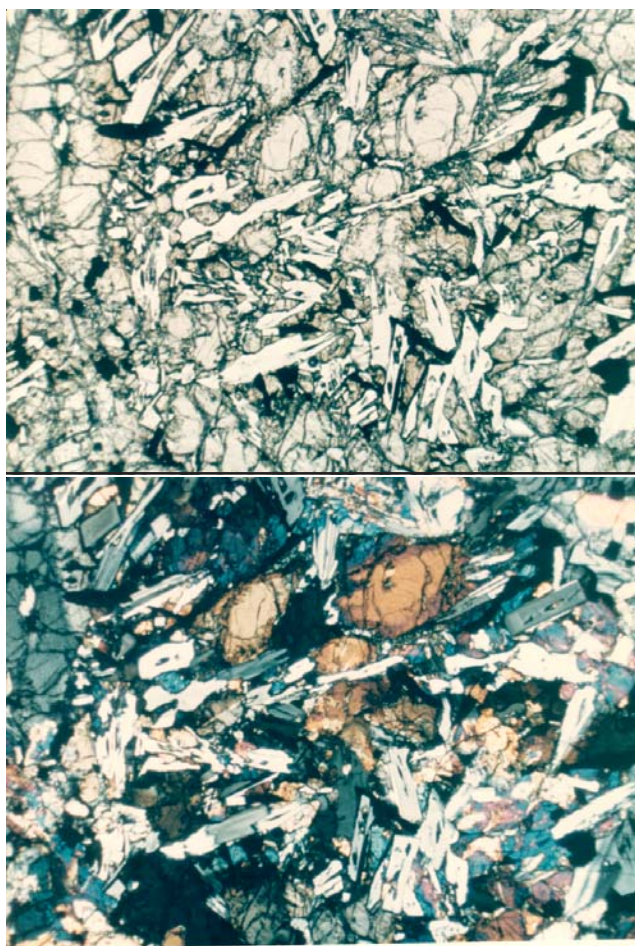


Figure 3: Photomicrographs of thin section 12020,11 (plane-polarized, crossed-nicols). Field of view is 2.6 mm. NASA # S70-49556-557.

Mineralogy

Olivine: According to Klein et al. (1971) the cores of olivine in 12020 are rather homogeneous (Fo₇₀₋₇₇), whereas the rims range from Fo₇₀ to Fo₅₀ (figure 4). Kushiro et al. (1971) reported a wide range in olivine composition from Fo₇₄ to Fo₃.

Pyroxene: Kushiro et al. (1971) and Klein et al. (1971) studied the composition of pyroxene in 12020 (figure 4). Pyroxene zones in Fe all the way to ferrohedenbergite (now there's a name).

Mineralogical Mode for 12020

	Neal et al. 1994	Klein et al. 1971	Papike et al. 1976
Olivine	19	15.1	11.4
Pyroxene	51.2	58.6	61.4
Plagioclase	25.9	20	20.7
Opaques			5.6
Ilmenite	0.2		
Chromite +Usp	2.7	4.6	
Mesostasis	0.5	1.7	
"silica"			0.2

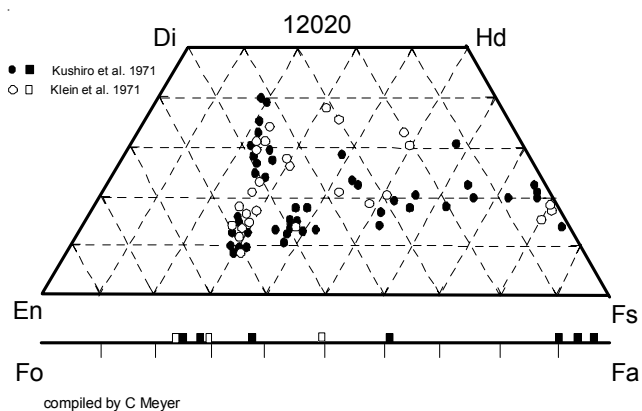


Figure 4: Pyroxene and olivine composition of 12020 (adapted from Klein et al. 1971, Kushiro et al. 1971).

Plagioclase: Plagioclase composition in 12020 range from An₉₃ to An₈₈ (Kushiro et al. 1971). Klein et al. (1971) report An₉₈ to An₈₀, with the majority as An₉₆.

Chemistry

The rare earth element pattern is relatively flat (figure 5). 12020 is relatively Mg-rich (figure 6), apparently due to accumulation of olivine (Walker et al. 1976).

Radiogenic age dating

Alexander et al. (1972) reported an Ar/Ar age of 3.20 ± 0.03 b.y. for 12020, consistent with that of other Apollo 12 basalts.

Cosmogenic isotopes and exposure ages

Hintenberger et al. (1971) determined exposure ages for 12020 using ³He (77 m.y.), ²¹Ne (71 m.y.) and ³⁸Ar (56 m.y.). The suntan age for 12020 (from etched solar flare track studies) is 2.6 m.y. (Bhandari et al. 1971).

Other Studies

Bogard et al. (1971) reported the content and isotopic composition of rare gases in 12020.

There are 13 thin sections.

List of Photo #s for 12020

S69-24225 TS
 S69-24213 closeup
 S69-64130 color mug
 S69-64105
 S69-63324-332 B&W mug
 S70-43638-640 color mug
 S70-19641-644 wire saw cut
 S70-49135-144 TS color
 S70-25406-408
 S70-25421-424
 S70-30251-253
 S70-25890-893
 S70-27991
 S70-31559-566 TS

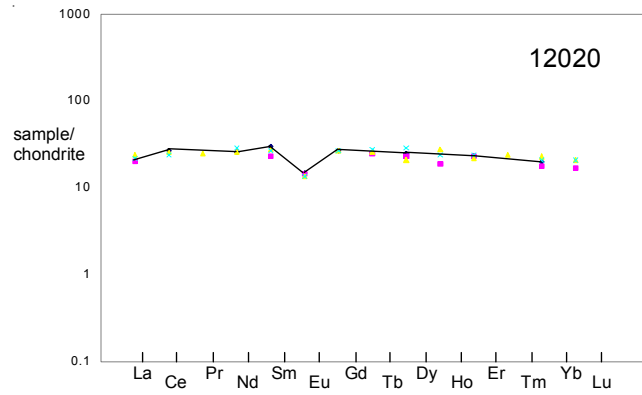


Figure 5: Rare-earth-element diagram for 12020 (idms data from Hubbard connected).

Summary of Age Data for 12020

Alexander et al. 1971 Ar/Ar 3.20 ± 0.03 Rb/Sr

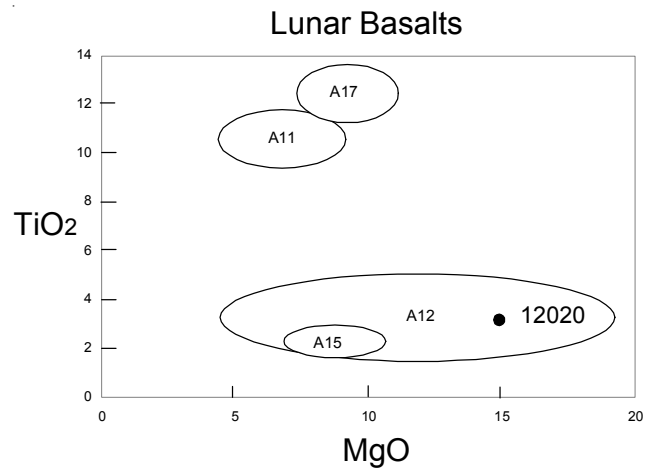
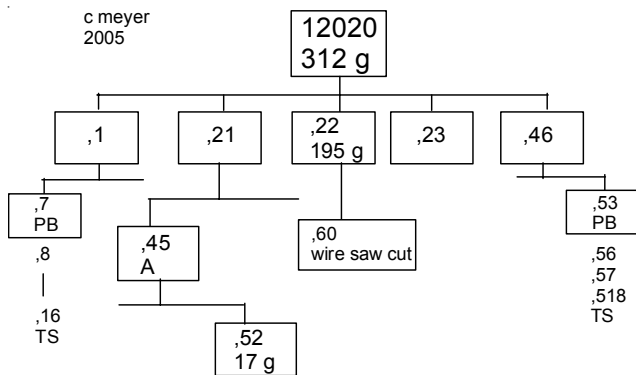


Figure 6: Composition of lunar basalts showing 12020.

Table 1. Chemical composition of 12020.

reference weight	Kushiro71	Hubbard71	Weismann75 259 mg	Wanke71	Cuttitta71	Wakita71 0.444 0.408	Haskin71	Compston71	Anders71
SiO2 %	44.45 (a)			43.86 (c)	44.6 (d)	42.2 (c)		44.66 (f)	
TiO2	2.54 (a)			2.64 (c)	2.56 (d)	2.7 3 (c)		2.73 (f)	
Al2O3	7.99 (a)			7.2 (c)	8 (d)	8.5 8.3 (c)		7.31 (f)	
FeO	20.65 (a)			21.1 (c)	20.7 (d)	21.8 (c)		21.58 (f)	
MnO	0.26 (a)			0.28 (c)	0.27 (d)	0.253 0.26 (c)		0.28 (f)	
MgO	14.89 (a)			15.65 (c)	14.4 (d)	16.1 (c)		13.91 (f)	
CaO	8.53 (a)			8.12 (c)	8.53 (d)	8.7 8.8 (c)		8.73 (f)	
Na2O	0.21 (a)	0.19		0.17 (c)	0.23 (d)	0.22 0.213 (c)		0.21 (f)	
K2O	0.06 (a)	0.056 (b)	0.056 (b)	0.046 (c)	0.06 (d)	0.069 (c)		0.064 (f)	
P2O5	0.02 (a)				0.08 (d)			0.08 (f)	
S %								0.06 (f)	
sum									
Sc ppm				45.4 (c)	39 (d)	42 (c)			
V					155 (d)	180 200 (e)		146 (f)	
Cr	4653 (a)			4560 (c)	4330 (d)	4187 (c)		3780 (f)	
Co				61 (c)	64 (d)	61 (c)		50 (f)	68 (e)
Ni					77 (d)			50 (f)	
Cu				6.9 (c)	9 (d)			13 (f)	
Zn								4 (f)	0.74 (e)
Ga					4.8 (d)			1.8 (f)	
Ge ppb									
As									
Se									0.114 (e)
Rb		0.997 (b)	0.997 (b)		1.4 (d)	1 (e)		1.03 (f)	0.85 (e)
Sr		93.6 (b)	93.6 (b)		65 (d)			91.4 (f)	
Y					37 (d)	34 (e)		32 (f)	
Zr					119 (d)			97 (f)	
Nb					13 (d)			5 (f)	
Mo									
Ru									
Rh									
Pd ppb									
Ag ppb									0.98 (e)
Cd ppb									1.1 (e)
In ppb						12 (e)			2.7 (e)
Sn ppb									
Sb ppb									
Te ppb									
Cs ppm						0.05 (e)			0.039 (e)
Ba		64.4 (b)	64.4 (b)		61 (d)	25 (c)		60 (f)	
La				4.82 (c)		5.9 (e)	5.19 (c)	4 (f)	
Ce		16.1 (b)	16.1 (b)			16.1 (e)	14.5 (c)	11 (f)	
Pr						2.2 (e)			
Nd		12 (b)	12 (b)			12 (e)	13 (c)		
Sm		4.5 (b)	4.5 (b)	3.4 (c)		4.08 (e)	3.92 (c)		
Eu		0.839 (b)	0.839 (b)	0.82 (c)		0.79 (e)	0.76 (c)		
Gd		5.43 (b)	5.43 (b)			5.4 (e)	5.3 (c)		
Tb				0.91 (c)		0.96 (e)	1.02 (c)		
Dy		6.13 (b)	6.13 (b)	5.68 (c)		5.2 (e)	7.1 (c)		
Ho				1.07 (c)		1.55 (e)	1.34 (c)		
Er		3.75 (b)	3.75 (b)			3.5 (e)	3.8 (c)		
Tm						0.59 (e)			
Yb		3.69 (b)	3.28 (b)	2.91 (c)	5.1 (d)	3.8 (e)	3.43 (c)		
Lu				0.42 (c)		0.54 (e)	0.51 (c)		
Hf			0.14 (b)	3.8 (c)		2.4 (c)			
Ta				0.45 (c)					
W ppb									
Re ppb									
Os ppb									
Ir ppb									0.04 (e)
Pt ppb									
Au ppb							(c)		0.36 (e)
U ppm									

technique (a) conventional wet, (b) IDMS, (c) INAA, (d) mixed microchem, XRF, emission spec., (e) RNAA, (f) XRF

Table 1b. Chemical composition of 12020.

reference	Neal2001	
weight		
SiO ₂ %		
TiO ₂		
Al ₂ O ₃		
FeO		
MnO		
MgO		
CaO		
Na ₂ O		
K ₂ O		
P ₂ O ₅		
S %		
sum		
Sc ppm	47	(a)
V	182	(a)
Cr	3615	(a)
Co	66	(a)
Ni	89	(a)
Cu	16	(a)
Zn	89	(a)
Ga	3.35	(a)
Ge ppb		
As		
Se		
Rb	1.13	(a)
Sr	105	(a)
Y	43	(a)
Zr	119	(a)
Nb	8.45	(a)
Mo	1.12	(a)
Ru		
Rh		
Pd ppb		
Ag ppb		
Cd ppb		
In ppb		
Sn ppb		
Sb ppb	30	(a)
Te ppb		
Cs ppm	0.02	(a)
Ba	64	(a)
La	5.87	(a)
Ce	17.6	(a)
Pr	2.53	(a)
Nd	12.9	(a)
Sm	4.38	(a)
Eu	0.73	(a)
Gd	5.78	(a)
Tb	1.11	(a)
Dy	7.11	(a)
Ho	1.41	(a)
Er	3.82	(a)
Tm	0.53	(a)
Yb	3.6	(a)
Lu	0.52	(a)
Hf	3.12	(a)
Ta	0.44	(a)
W ppb	110	(a)
Re ppb		
Os ppb		
Ir ppb		
Pt ppb		
Au ppb		
Th ppm	0.77	(a)
U ppm	0.22	(a)
technique	(a) ICP-MS	

References for 12020

Alexander E.C., Davis P.K. and Reynolds J.H. (1972) Rare-gas analysis on neutron irradiated Apollo 12 samples. *Proc. 3rd Lunar Sci. Conf.* 1787-1795.

Anders E., Ganapathy R., Keays R.R., Laul J.C., and Morgan J.W. (1971) Volatile and siderophile elements in lunar rocks: Comparison with terrestrial and meteoritic basalts. *Proc. 2nd Lunar Sci. Conf.* 1021-1036.

Anders E., Ganapathy R., Krahenbuhl U. and Morgan J.W. (1973) Meteoritic material on the Moon. *The Moon* **8**, 3-24.

Bhandari N., Bhat S., Lal D., Rajagopalan G., Tamhane A.S. and Venkatavaradan V.S. (1971) High resolution time averaged (millions of years) energy spectrum and chemical composition of iron-group cosmic-ray nuclei at 1 A.U. based on fossil tracks in Apollo samples. *Proc. 2nd Lunar Sci. Conf.* 2611-2619.

Bogard D.D., Funkhouser J.G., Schaeffer O.A. and Zahringer J. (1971) Noble gas abundances in lunar material-cosmic ray spallation products and radiation ages from the Sea of Tranquillity and the Ocean of Storms. *J. Geophys.*

Compston W., Berry H., Vernon M.J., Chappell B.W. and Kay M.J. (1971) Rubidium-strontium chronology and chemistry of lunar material from the Ocean of Storms. *Proc. 2nd Lunar Sci. Conf.* 1471-1485.

Haskin L.A., Helmke P.A., Allen R.O., Anderson M.R., Korotev R.L. and Zweifel K.A. (1971) Rare-earth elements in Apollo 12 lunar materials. *Proc. 2nd Lunar Sci. Conf.* 1307-1317.

Hintenberger H., Weber H.W. and Takaoka N. (1971) Concentrations and isotopic abundances of the rare gases in lunar matter. *Proc. 2nd Lunar Sci. Conf.* 1607-1625.

Hubbard N.J. and Gast P.W. (1971) Chemical composition and origin of nonmare lunar basalts. *Proc. 2nd Lunar Sci. Conf.* 999-1020.

James O.B. and Wright T.L. (1972) Apollo 11 and 12 mare basalts and gabbros: Classification, compositional variations and possible petrogenetic relations. *Geol. Soc. Am. Bull.* **83**, 2357-2382.

- Klein C., Drake J.C. and Frondel C. (1971) Mineralogical, petrological, and chemical features of four Apollo 12 lunar microgabbros. *Proc. 2nd Lunar Sci. Conf.* 265-284.
- Kushiro I. and Haramura H. (1971) Major element variation and possible source materials of Apollo 12 crystalline rocks. *Science* **171**, 1235-1237.
- Kushiro I., Nakamura Y., Kitayama K. and Akimoto S-I. (1971) Petrology of some Apollo 12 crystalline rocks. *Proc. 2nd Lunar Sci. Conf.* 481-495.
- LSPET (1970) Preliminary examination of lunar samples from Apollo 12. *Science* **167**, 1325-1339.
- Neal C.R. (2001) Interior of the moon: The presence of garnet in the primitive deep lunar mantle. *J. Geophys. Res.* **106**, 27865-27885.
- Neal C.R., Hacker M.D., Snyder G.A., Taylor L.A., Liu Y.-G. and Schmitt R.A. (1994a) Basalt generation at the Apollo 12 site, Part 1: New data, classification and re-evaluation. *Meteoritics* **29**, 334-348.
- Neal C.R., Hacker M.D., Snyder G.A., Taylor L.A., Liu Y.-G. and Schmitt R.A. (1994b) Basalt generation at the Apollo 12 site, Part 2: Source heterogeneity, multiple melts and crustal contamination. *Meteoritics* **29**, 349-361.
- Papike J.J., Hodges F.N., Bence A.E., Cameron M. and Rhodes J.M. (1976) Mare basalts: Crystal chemistry, mineralogy and petrology. *Rev. Geophys. Space Phys.* **14**, 475-540.
- Reid A.M., Meyer C., Harmon R.S. and Brett R. (1970c) Metal grains in Apollo 12 igneous rocks. *Earth Planet. Sci. Lett.* **9**, 1-5.
- Wakita H. and Schmitt R.A. (1971) Bulk elemental composition of Apollo 12 samples: Five igneous and one breccia rocks and four soils. *Proc. 2nd Lunar Sci. Conf.* 1231-1236.
- Wakita H., Rey P. and Schmitt R.A. (1971) Abundances of the 14 rare earth elements and 12 other trace elements in Apollo 12 samples: Five igneous and one breccia rocks and four soils. *Proc. 2nd Lunar Sci. Conf.* 1319-1329.
- Wänke H., Wlotzka F., M. and Rieder R. (1971) Apollo 12 samples: Chemical composition and its relation to sample locations and exposure ages, the two component origin of the various soil samples and studies on lunar metallic particles. *Proc. 2nd Lunar Sci. Conf.* 1187-1208
- Wiesmann H. and Hubbard N.J. (1975) A compilation of the Lunar Sample Data Generated by the Gast, Nyquist and Hubbard Lunar Sample PI-Ships. Unpublished. JSC
- Walker D., Kirkpatrick R.J., Longhi J. and Hays J.F. (1976) Crystallization history of lunar picritic basalt sample 12002: Phase-equilibria and cooling-rate studies. *Geol. Soc. Am. Bull.* **87**, 646-656.

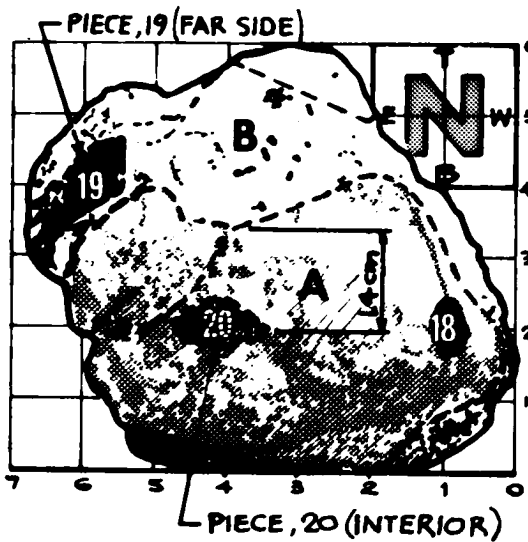
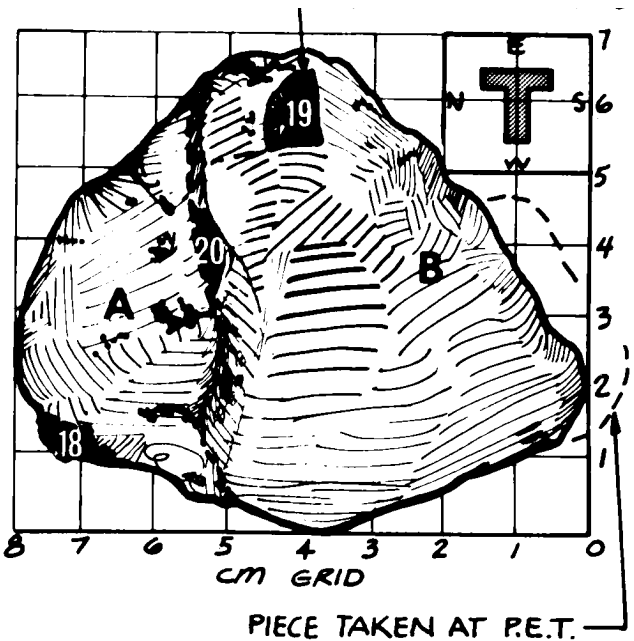
THE CHIPPING OF LUNAR ROCK 12020

DRWG. COMPLETED 7-24-70

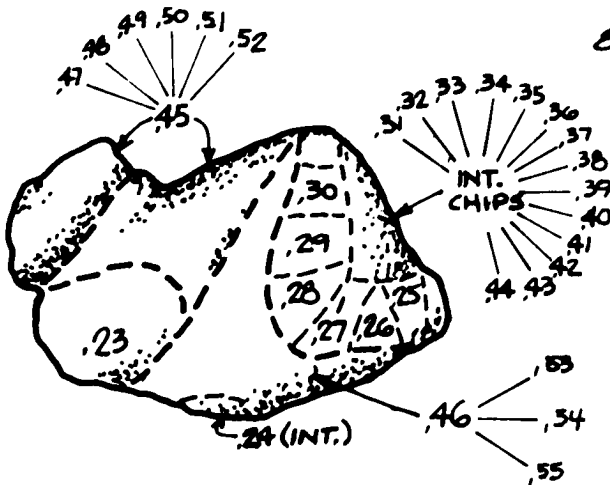
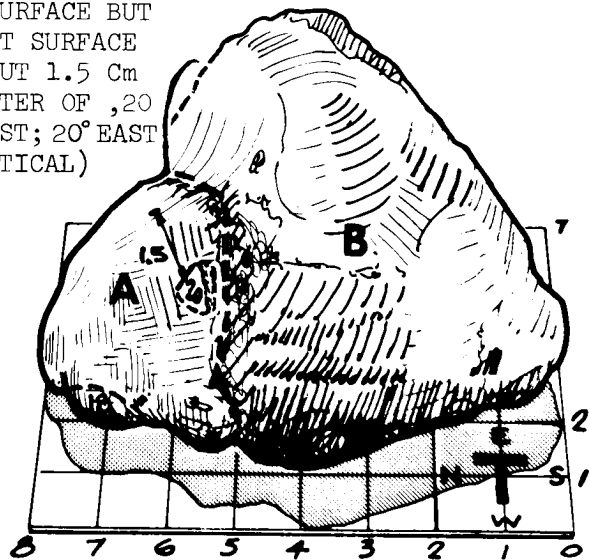
References for 12020

Alexander E.C., Davis P.K. and Reynolds J.H. (1972) Rare-gas analysis on neutron irradiated Apollo 12 samples. *Proc. 3rd Lunar Sci. Conf.* 1787-1795.

Anders E., Ganapathy R., Keays R.R., Laul J.C., and Morgan J.W. (1971) Volatile and siderophile elements in lunar rocks: Comparison with terrestrial and meteoritic basalts. *Proc. 2nd Lunar Sci. Conf.* 1021-1036.



PIECE ,20 IS 1.4 Cm STRAIGHT DOWN FROM SURFACE BUT NEAREST SURFACE IS ABOUT 1.5 Cm to CENTER OF ,20 (34° WEST; 20° EAST OF VERTICAL)



OTHER CHIPPING OF PIECE A (12020, 21)