

76558**Impact Melt Breccia****0.683 g, 1.5 x 0.8 x 0.5 cm****INTRODUCTION**

Sample 76558 was collected as a rake sample from the soil at Station 6 (Phinney et al., 1974)

PETROGRAPHY

This small fragment of light grey impact melt breccia (with some dark matrix regolith attached) is held together by black glass (Fig. 1). The appearance of 76558 is very similar to 76559.

WHOLE-ROCK CHEMISTRY

The composition of 76558 has not been determined.

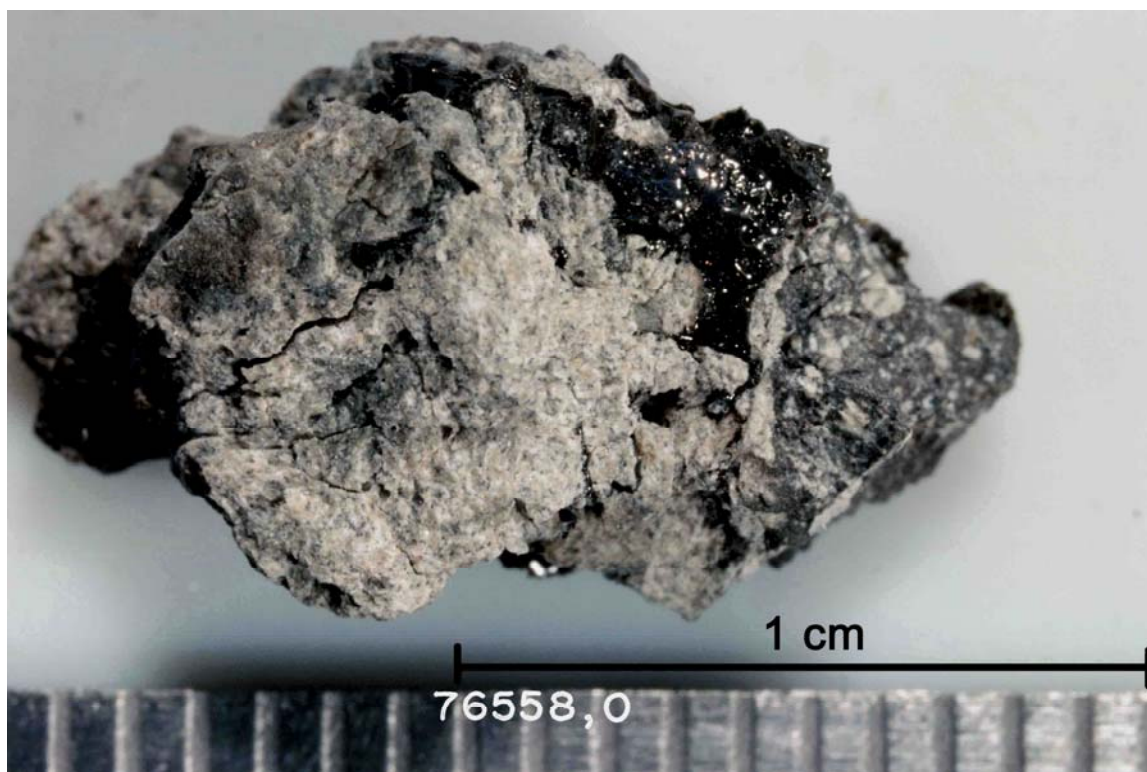


Figure 1: Photograph of 76558. Scale bar is marked in mm. S73-19631.