

INTRODUCTION: 68825 is a dark, coherent, irregularly shaped fragment of glassy impact melt (Fig. 1). At least one side apparently preserves a smooth exterior surface of a once-molten mass. The other side is coated by a thick layer of adhering soil. 68825 was taken from a soil collected adjacent to the boulder which yielded 68815.

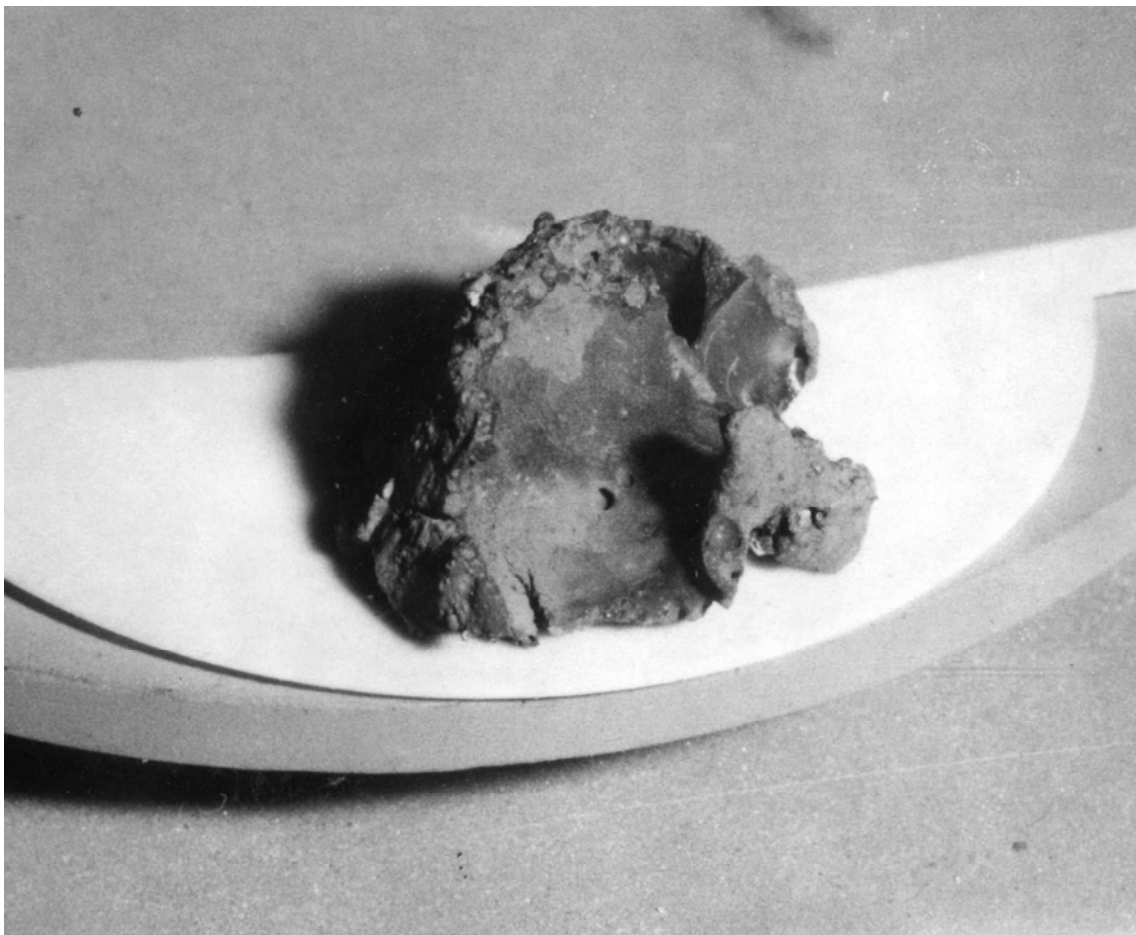


FIGURE 1. Sample is about 3 cm across.