

INTRODUCTION: 65915 is a dark gray, coherent, vesicular sample (Fig. 1). It is homogeneous and probably glass. A few small white clasts are present. There is no obvious original exterior surface of a molten mass, rather all surfaces are fractures. 65915 was taken from a soil sample collected on the inside south wall of a 20 m crater. It has rare zap pits.

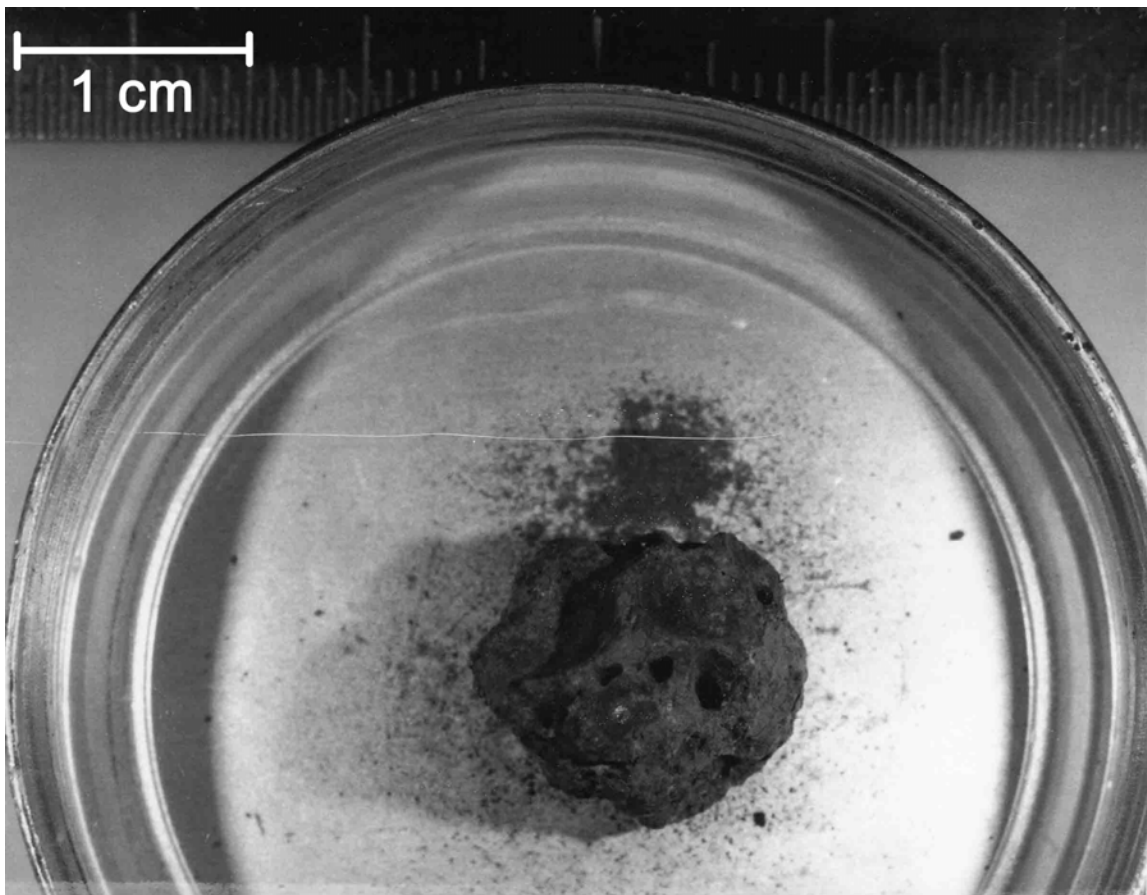


FIGURE 1.