

65586

65586      FRAGMENTAL POLYMICT BRECCIA      6.76 g  
(REGOLITH BRECCIA?), GLASS-COATED

INTRODUCTION: 65586 is a dark friable breccia thinly coated by coherent, vesicular glass (Fig. 1). Considerable soil adheres to the exterior surfaces of the glass and fills many vesicles. On fresh surfaces the glass is yellow green in color with streaks of white. It is a rake sample. Zap pits are absent.

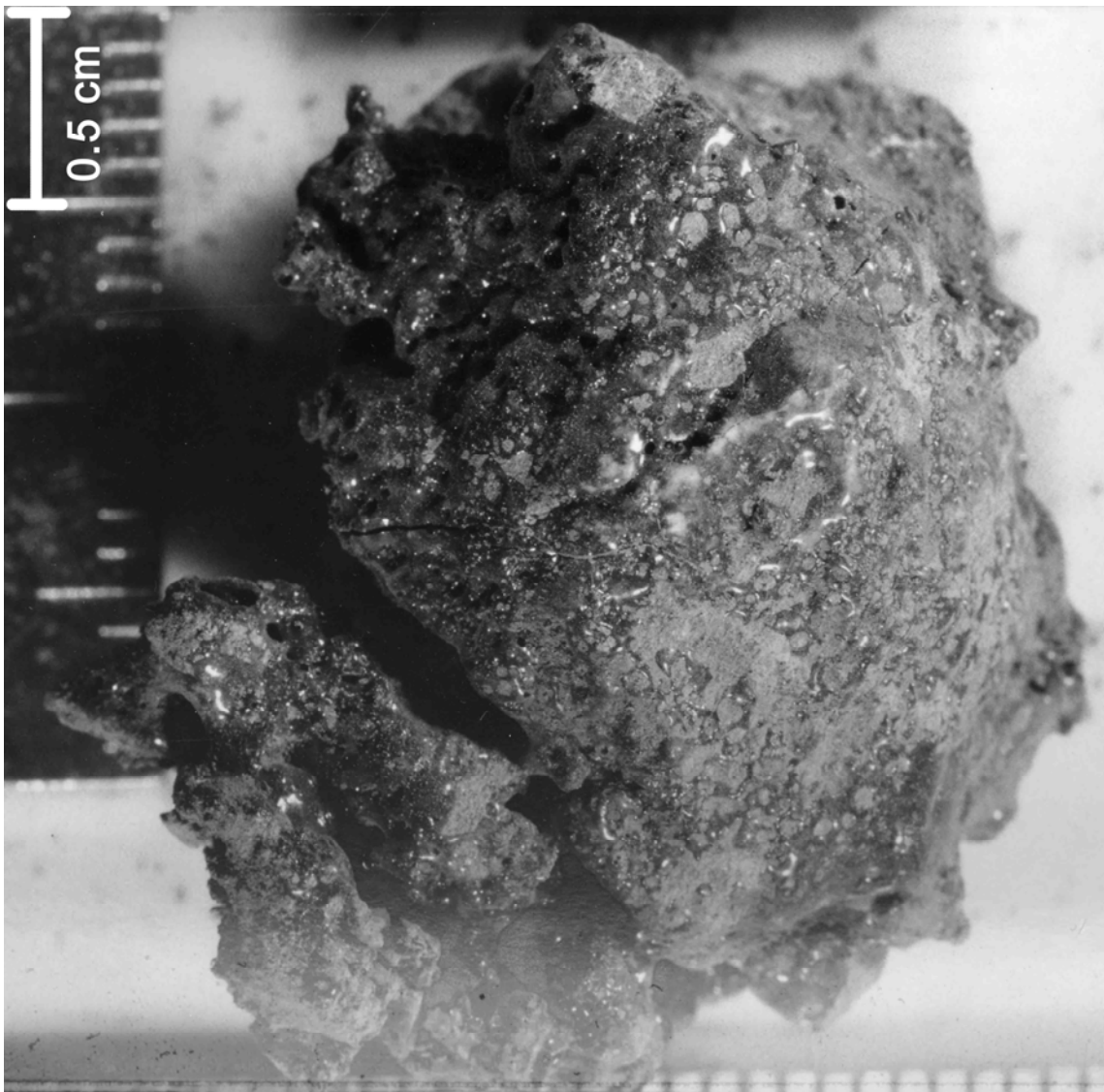


FIGURE 1.