

INTRODUCTION: 65585 is a yellow-green, coherent glass with large, inhomogeneously distributed vesicles (Fig. 1). It is a rake sample.

PETROLOGY: Warner et al. (1976b) provide a brief petrographic description. This fragment of highly vesicular, flow-banded glass contains several small mineral and lithic clasts (Fig. 2). One adhering fragment of clastic breccia is noted by Warner et al. (1976b).

PROCESSING AND SUBDIVISIONS: In 1973 the sample was split into two large, subequal pieces and three small chips. The three small chips (,1) were allocated to Keil for petrography. The two larger pieces remain as ,0.

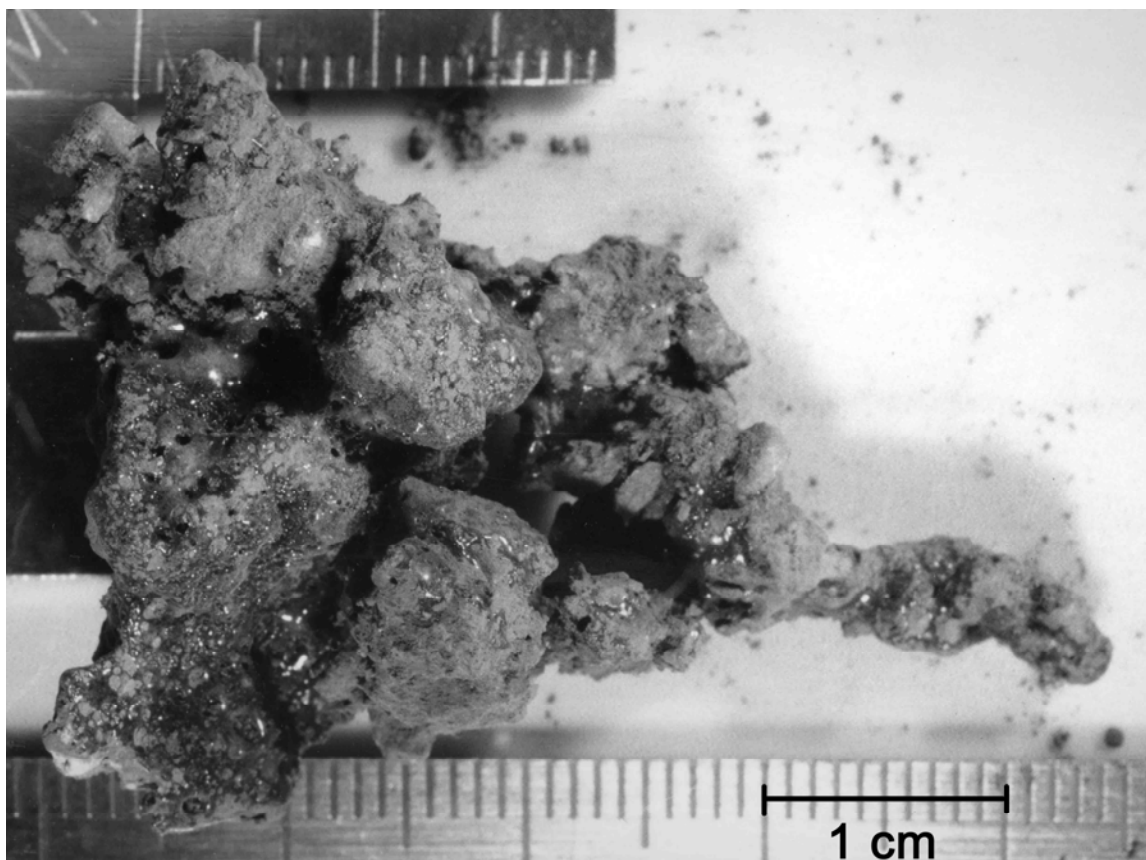


FIGURE 1.

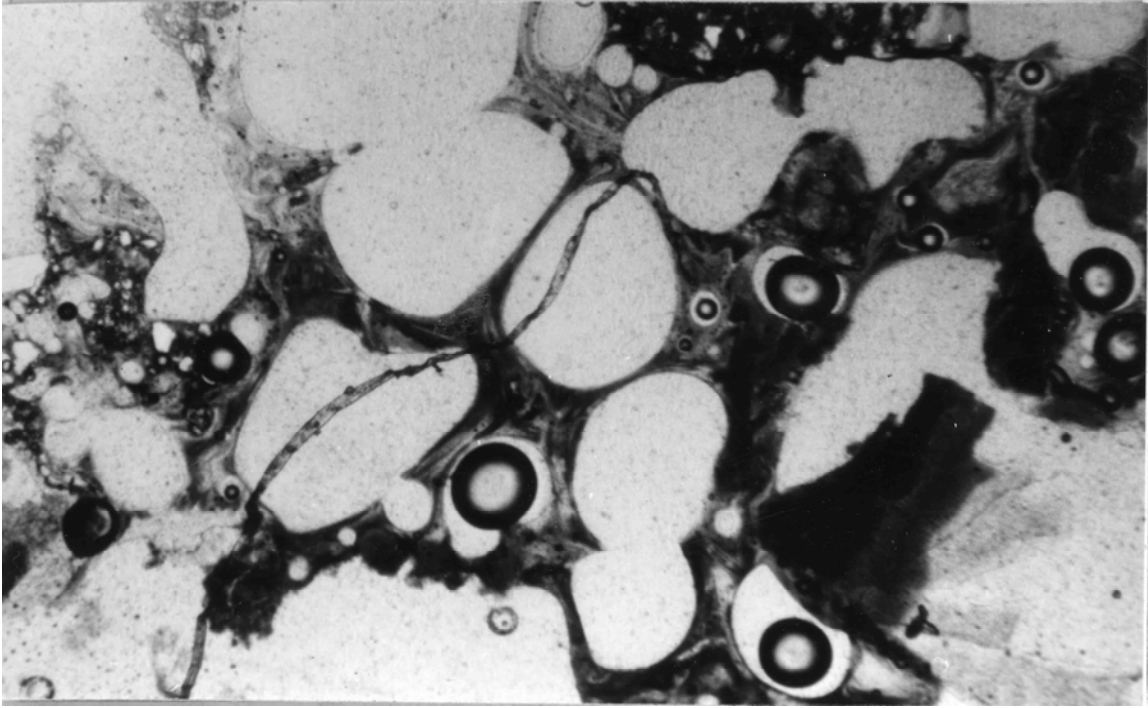


FIGURE 2. 65585,3. General view, partly xpl. Width 3 mm.