

INTRODUCTION: 65345 is a light gray, friable, clastic breccia (Fig. 1). It is a rake sample. Zap pits are very rare.

PETROLOGY: Warner et al. (1976b) provide a brief petrographic description. 65345 is a clastic breccia with high porosity (Fig. 2). Lithic fragments include fine-grained poikilitic rock, an anorthositic clast with a single large pyroxene crystal, and several types of breccia.

PROCESSING AND SUBDIVISIONS: In 1973 a small set of chips and fines (,1) were allocated to Keil for petrography.

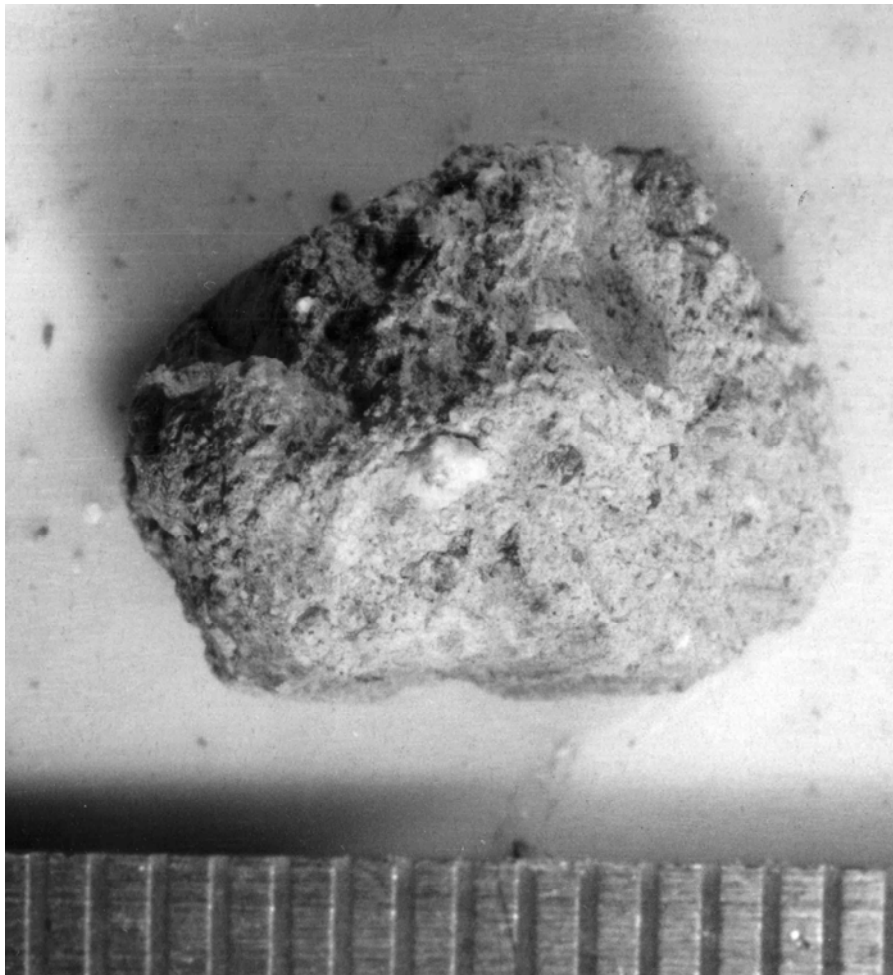


FIGURE 1. Smallest scale division in mm.

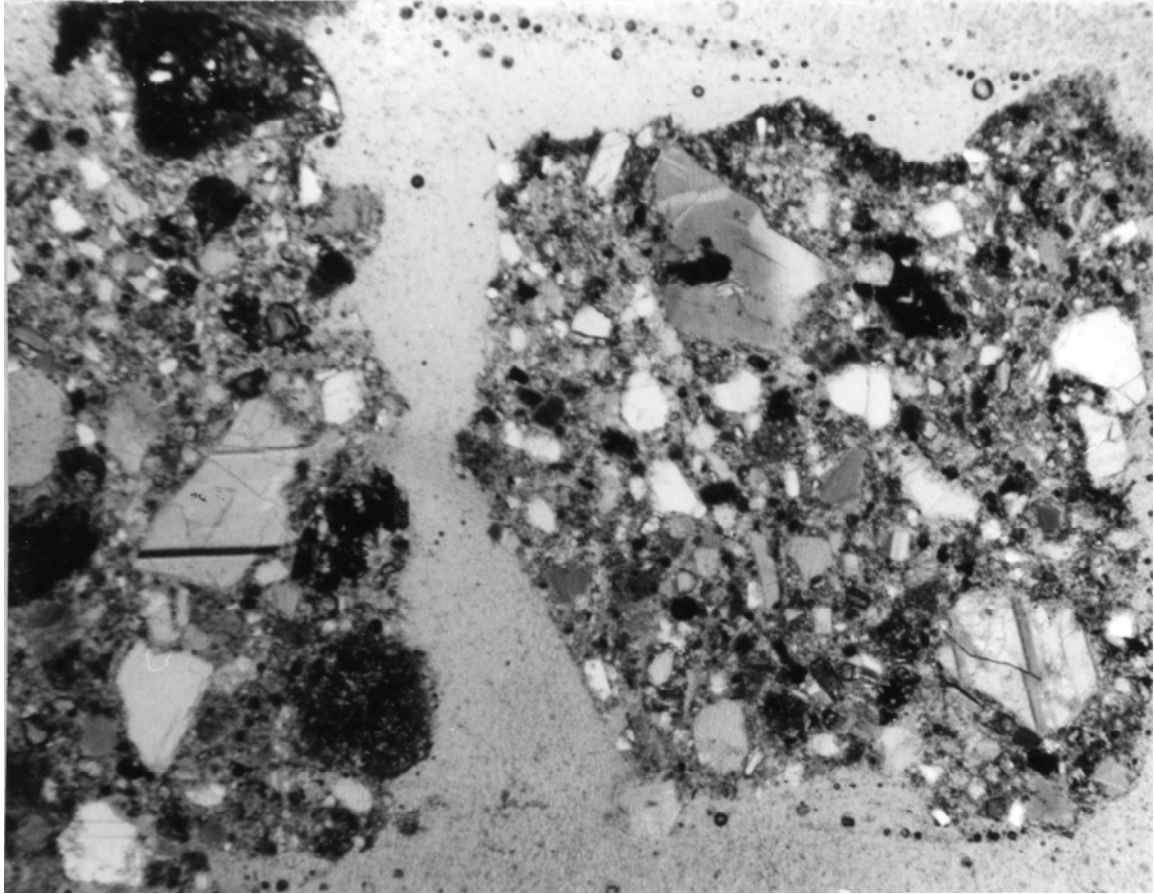


FIGURE 2. 65345,3. General view, partly xpl. Width 3 mm.