

64506

64506 FINE-GRAINED BASALTIC IMPACT MELT; 5.08 g
PARTLY GLASS-COATED

INTRODUCTION: 64506 is a coherent, angular chip of medium pale gray impact melt (Fig. 1). The melt contains plagioclase laths ~100 μm long and schlieren of white clasts. Black, vesicular glass coats one surface; adjacent to the rock it is crystalline or devitrified.

64506 was taken from a regolith sample collected near the rim of a subdued 15 m crater. Zap pits are common on the basaltic melt, but the glass coat has a smooth surface.

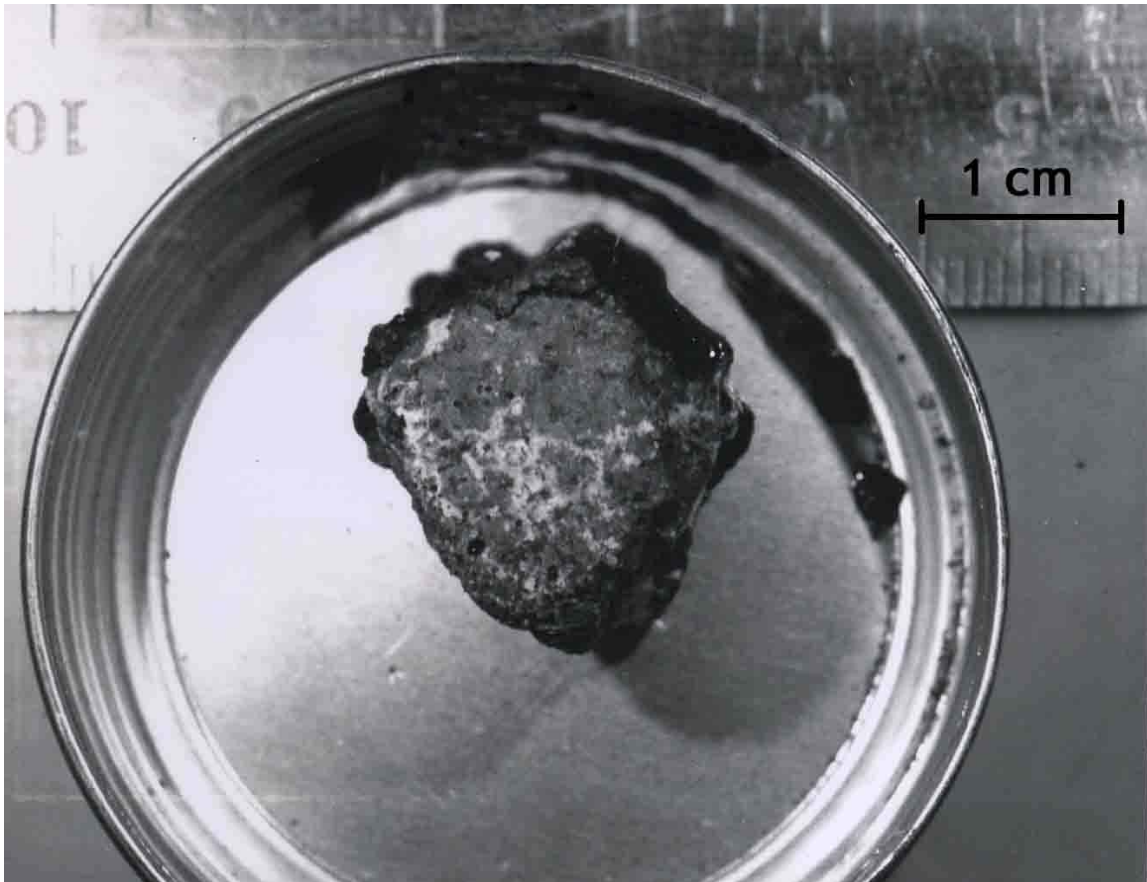


FIGURE 1.