

**INTRODUCTION:** 63586 is a medium gray, heterogeneous, coherent rock (Fig. 1) which is a fine-grained impact melt. It is a rake sample and has many zap pits.

**PETROLOGY:** 63586 consists of rounded plagioclase clasts (some embayed) in a fine-grained impact melt (Fig. 2). The melt contains some ilmenite and plagioclase laths and is more mafic than the clast population, which has a seriate size distribution. Some of the clasts are flame-textured, one being a mosaic of grains with such textures. The pale-colored zones (Fig. 1) are schlieren of plagioclase-rich breccias.

**PROCESSING AND SUBDIVISIONS:** Of two chips (Fig. 1) ,1 was used to make thin sections ,4 and ,5.

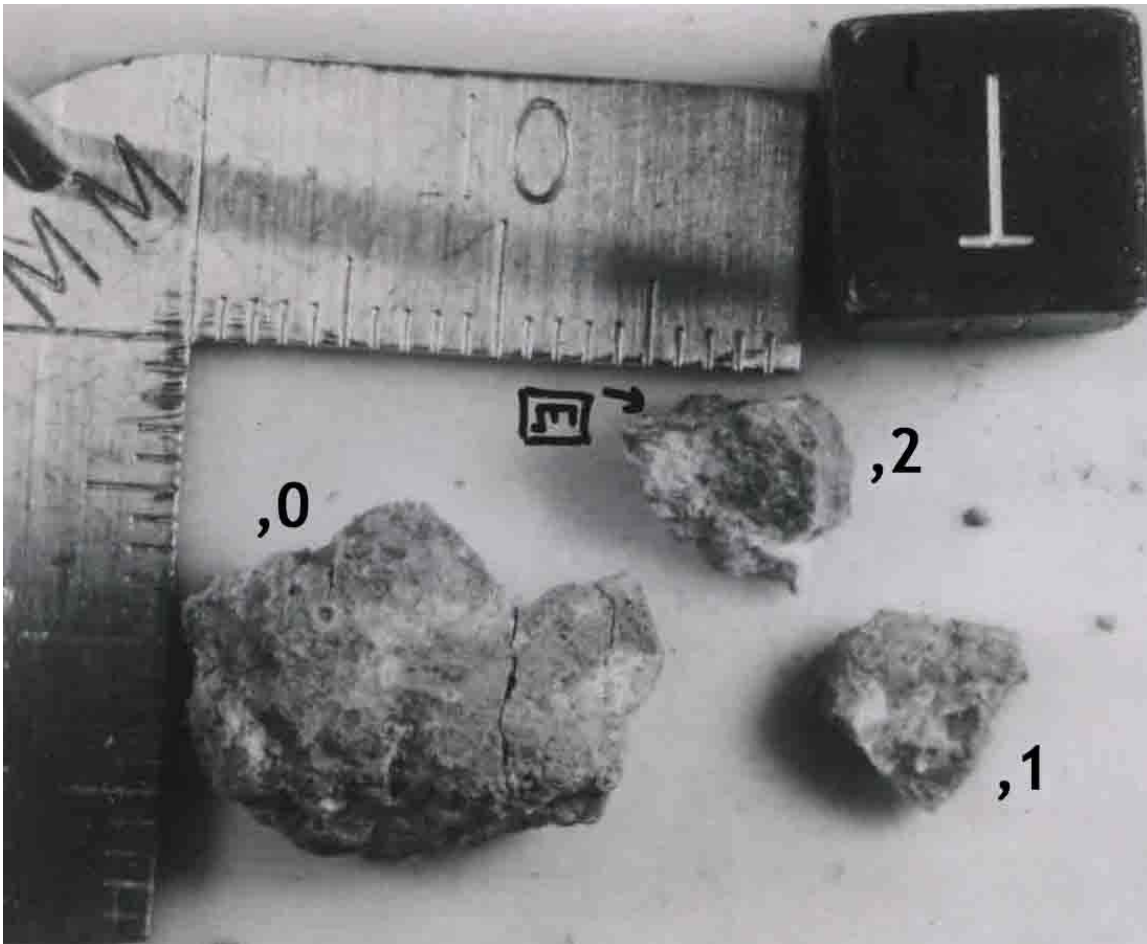


FIGURE 1.

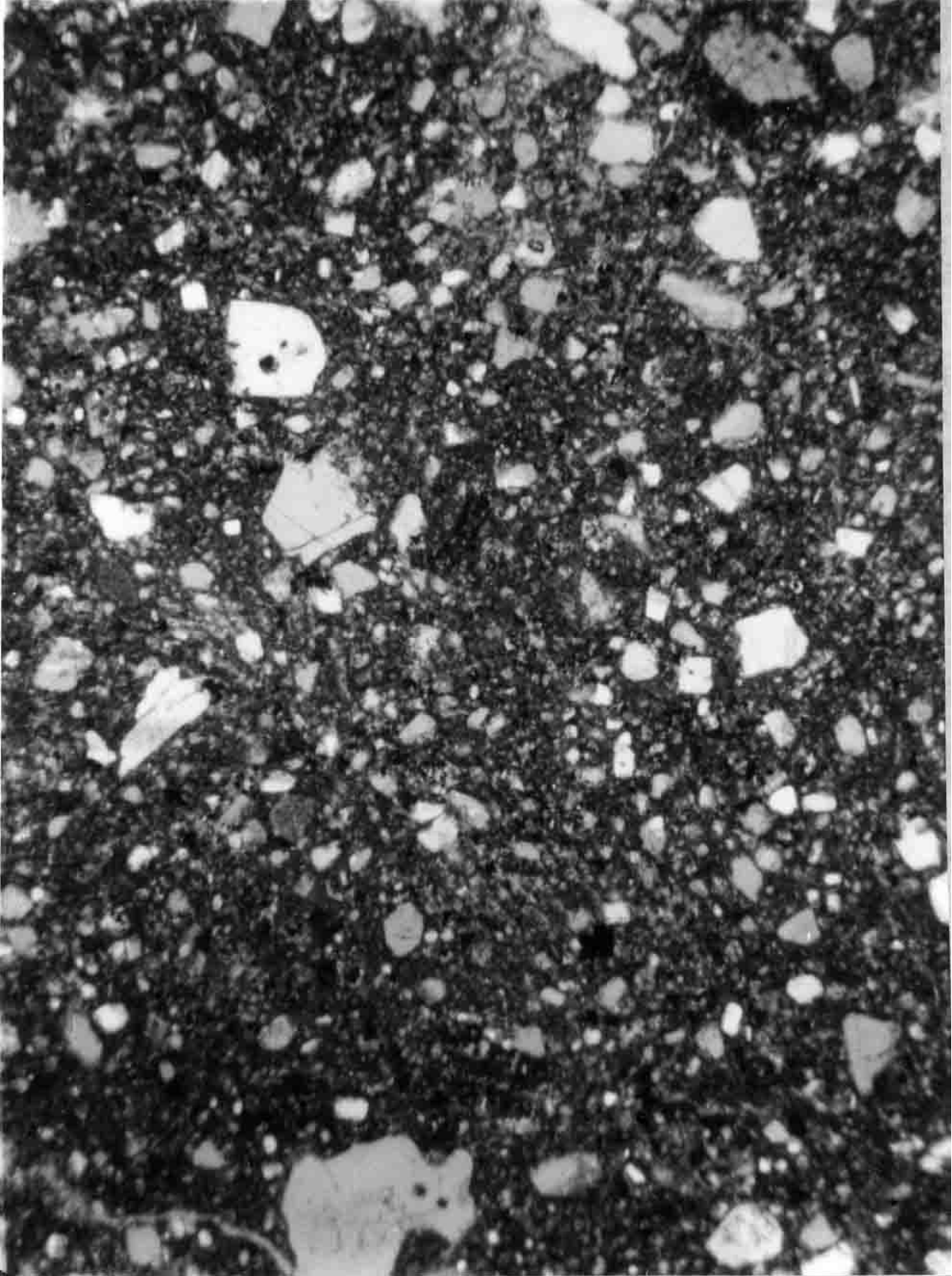


FIGURE 2. 63586,4, general view, ppl. Width 2 mm.