

INTRODUCTION: 63577 is a medium gray, coherent polymict breccia (Fig. 1), much like a fragmental breccia but either melt-bonded or sintered. It is a rake sample.

PETROLOGY: 63577 superficially is similar to a fragmental breccia (Fig. 2) but is more coherent and is bonded or sintered with little pore-space. Patches of fine-grained melt or glass are visible in places. The clasts are angular and are mainly plagioclases including large shocked (and subsequently annealed) plagioclase. Lithic clasts include granoblastic and poikiloblastic impactites, basaltic impact melts, and brownish glass fragments.

PROCESSING AND SUBDIVISIONS: Four chips were potted together as ,1 and thin sections ,3 and ,4 cut from it.

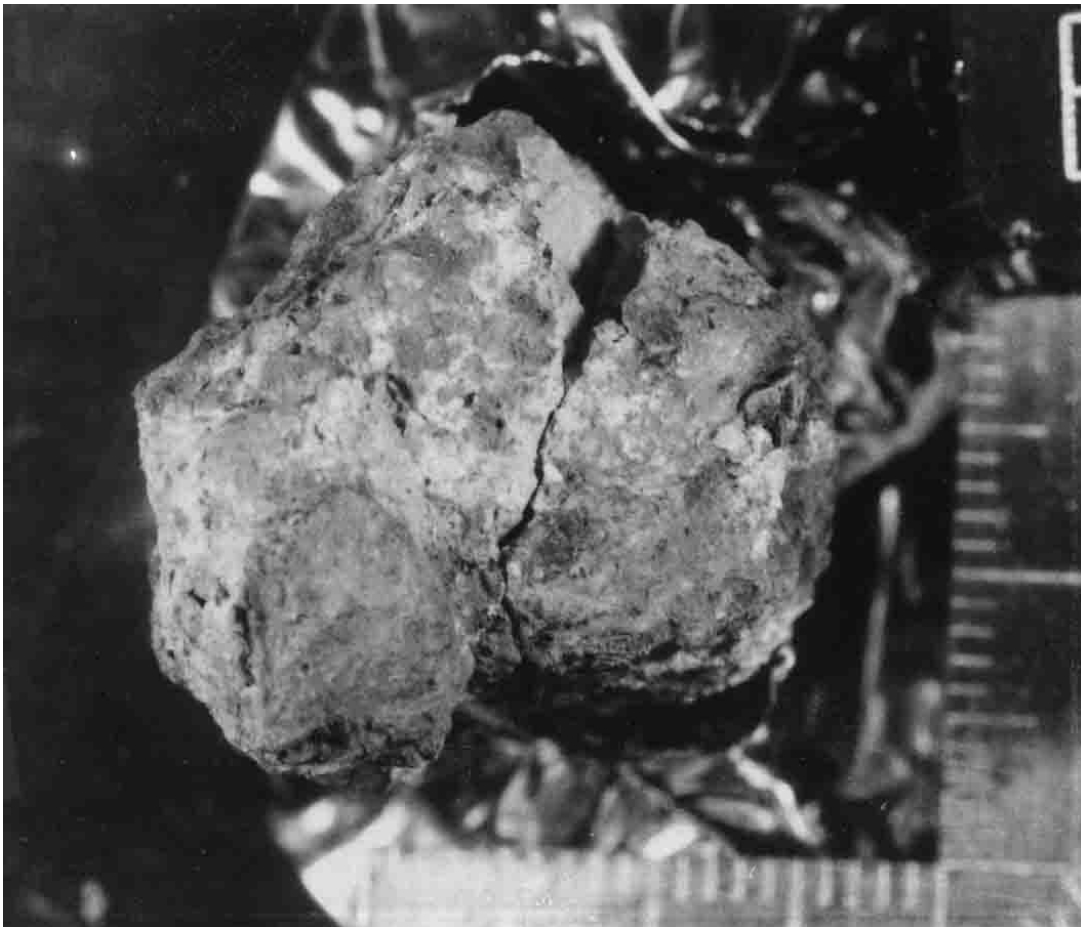


FIGURE 1. Smallest scale division in mm.

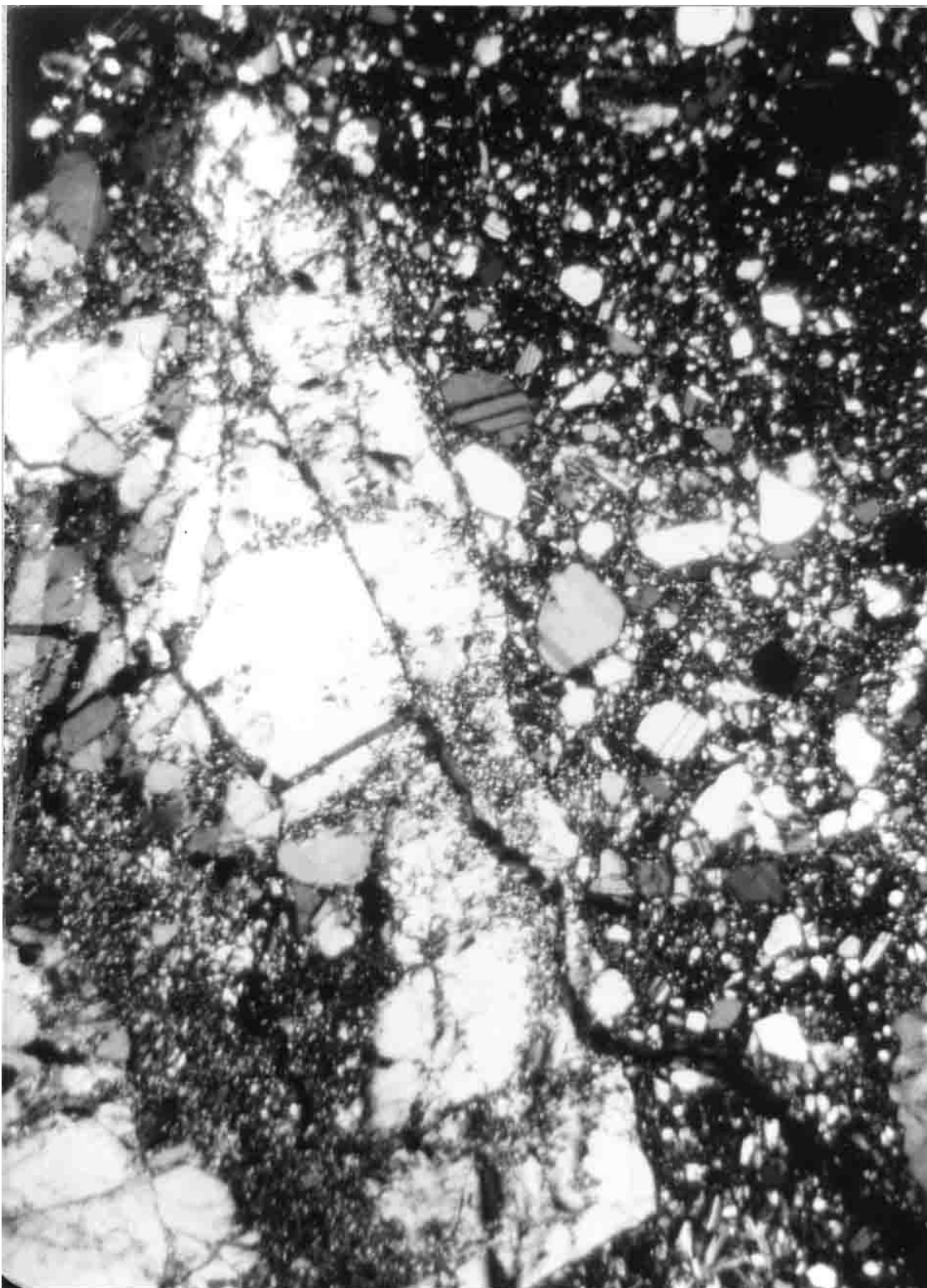


FIGURE 2. 63577,3, general view, xpl. Width 2 mm.