

INTRODUCTION: 63505 is a dark gray, coherent, fine-grained impact melt with some white patches (Fig. 1). It was taken from a regolith sample and has a few zap pits on one surface.

PETROLOGY: 63505 is an extremely fine-grained impact melt containing slightly rounded fragments which are mainly plagioclase (Fig. 2) and have a size distribution ranging down to very tiny. The clasts are not shocked. A few lithic clasts are present. The melt is a mortar of micropoikilitic (?) material with tiny ilmenite laths and apparently free of glass.

PROCESSING AND SUBDIVISIONS: Three representative documented chips (,1; ,2; ,3) adjacent to each other were removed and ,3 made into thin sections ,13 and ,14.



FIGURE 1. S-72-38969.

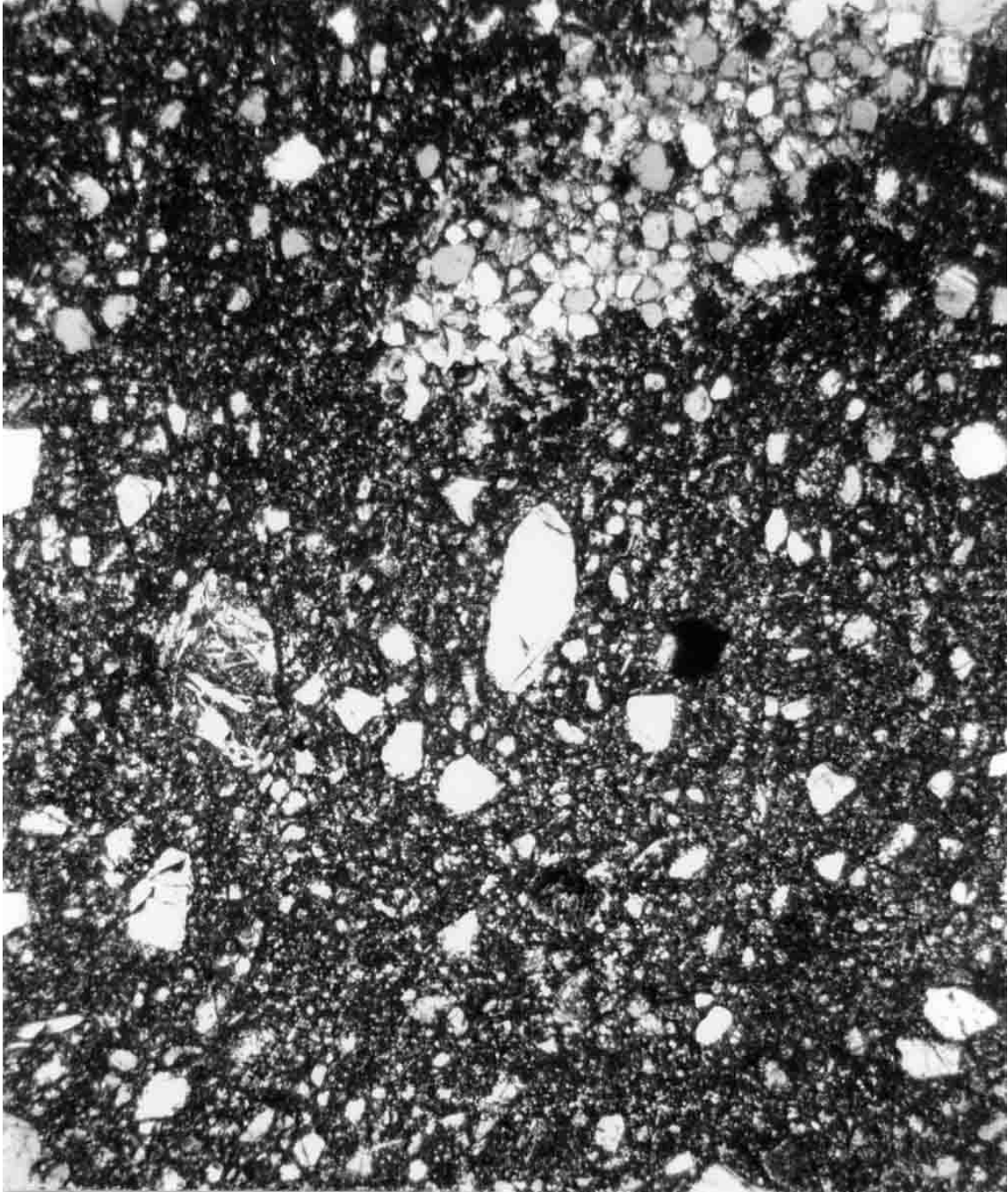


FIGURE 2. 63505,13, general view, ppl. Width 2 mm.