

15632    MEDIUM-GRAINED OLIVINE-NORMATIVE    ST. 9A    2.30 g  
MARE BASALT

INTRODUCTION: 15632 is a medium-grained, olivine-bearing mare basalt which is vuggy but not vesicular (Fig. 1). Olivines do not form phenocrysts. It is tough. 15632 was collected as part of the rake sample at Station 9A.

PETROLOGY: 15632 is medium-grained and similar to other medium-grained Apollo 15 olivine-normative mare basalts (Fig. 2). The dominant phase is pigeonite (1 to 2 mm) which is frequently twinned and zoned to augite. The plagioclase is ophitic, enclosing small olivines and pyroxenes. A few olivines are as large as 1 mm and anhedral but can scarcely be considered phenocrysts.

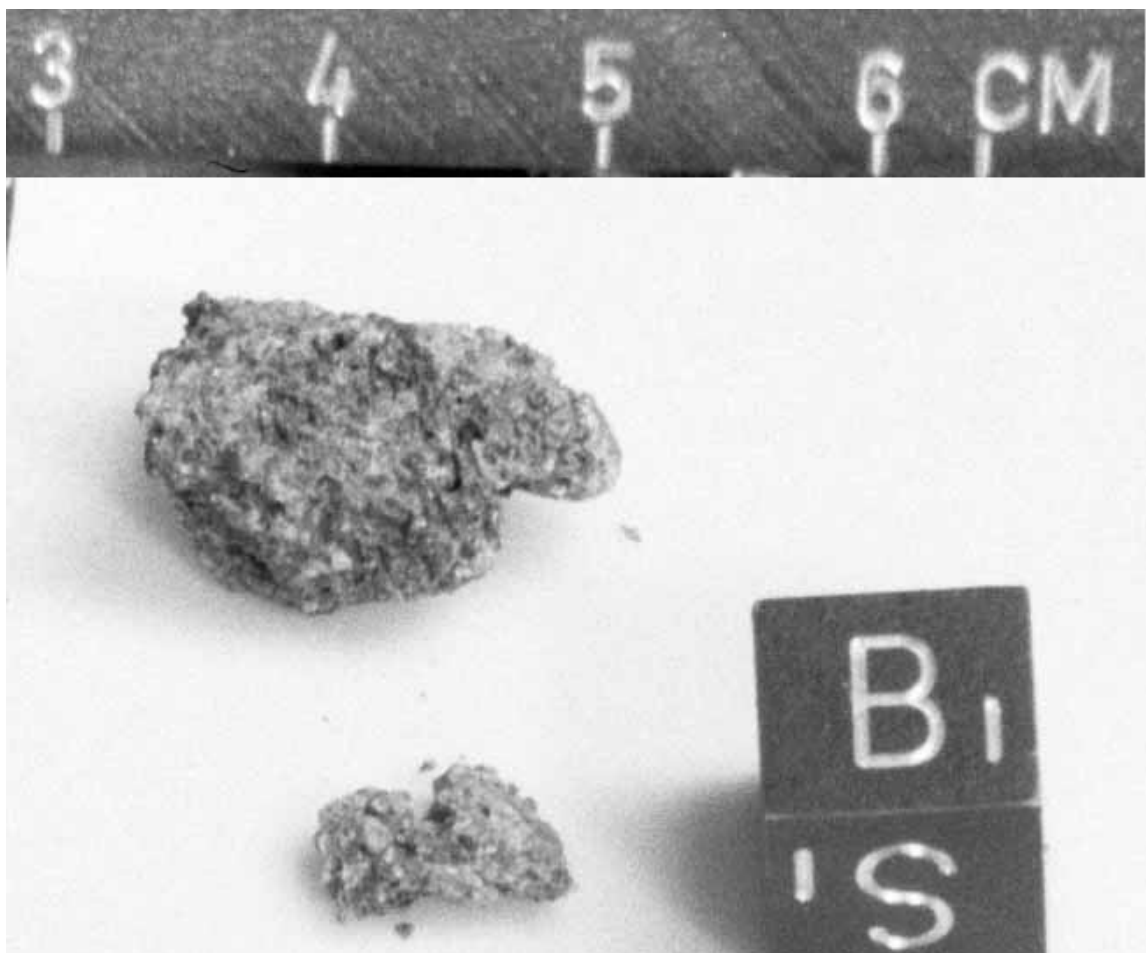


Figure 1. Post-chip view of 15632. S-71-56308

PROCESSING AND SUBDIVISIONS: Chipping produced ,1 (Fig. 1) which was almost entirely used in producing thin sections ,1 and ,6. ,0 is now 2.05 g.

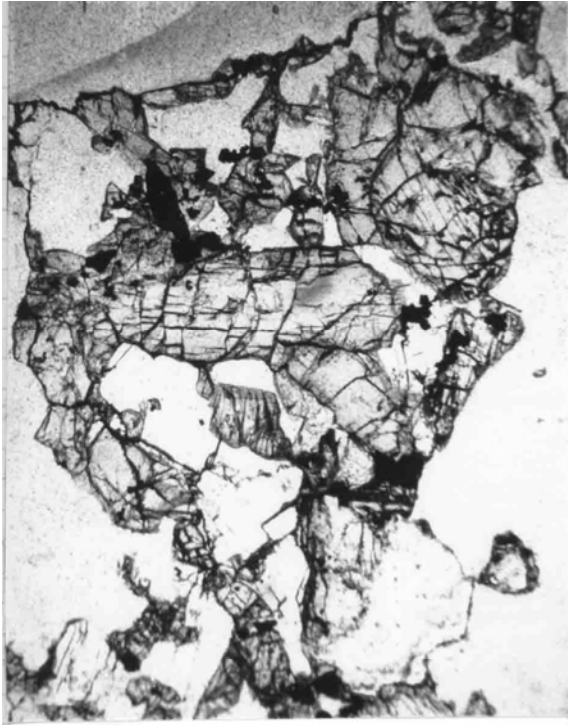


Fig. 2a

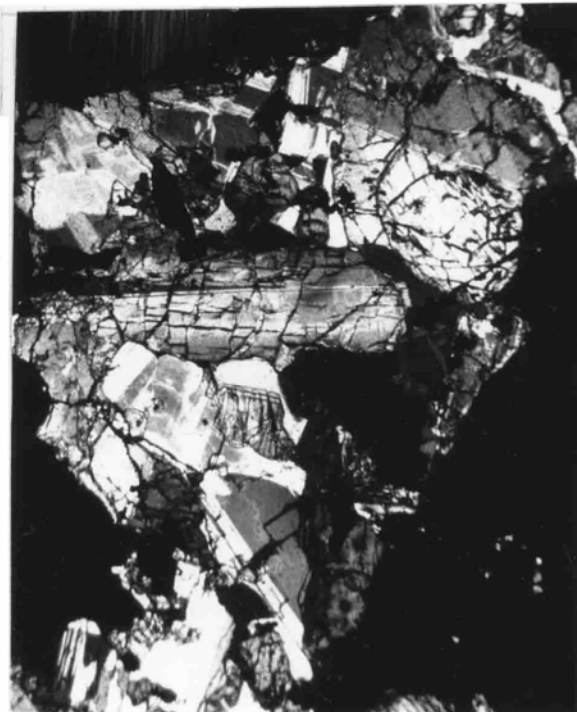


Fig. 2b

Figure 2. Photomicrograph of 15632,6.  
Widths about 3 mm. a) transmitted light; b) crossed polarizers.