

INTRODUCTION: 15326 is a glassy regolith breccia (Fig. 1) poor in lithic fragments, and rich in glass spheres. It was dusty but with abundant green material visible. It has a few zap pits. It was collected as part of the rake sample from the north-east rim of Spur Crater.



Figure 1. Post-chip view of 15326. Largest piece is ,0; second largest is ,1, used for thin sections. S-71-57228

PETROLOGY: 15326 is a regolith breccia which is very rich in glass spheres (Fig. 2), mainly green, and very poor in lithic and mineral fragments. Steele et al. (1977) reported 50% glass, 45% fine matrix, only 5% mineral fragments, and no lithic fragments. The glasses are mainly spheres or devitrified spheres. The fine matrix is opaque, brown, and glassy, and is moderately porous.

PROCESSING AND SUBDIVISIONS: Chips taken from ,0 (Fig. 1) include the largest ,1, which was used to make thin sections ,1 and ,6, with potted butts remaining. The other chips were not numbered separately, remaining with ,0.

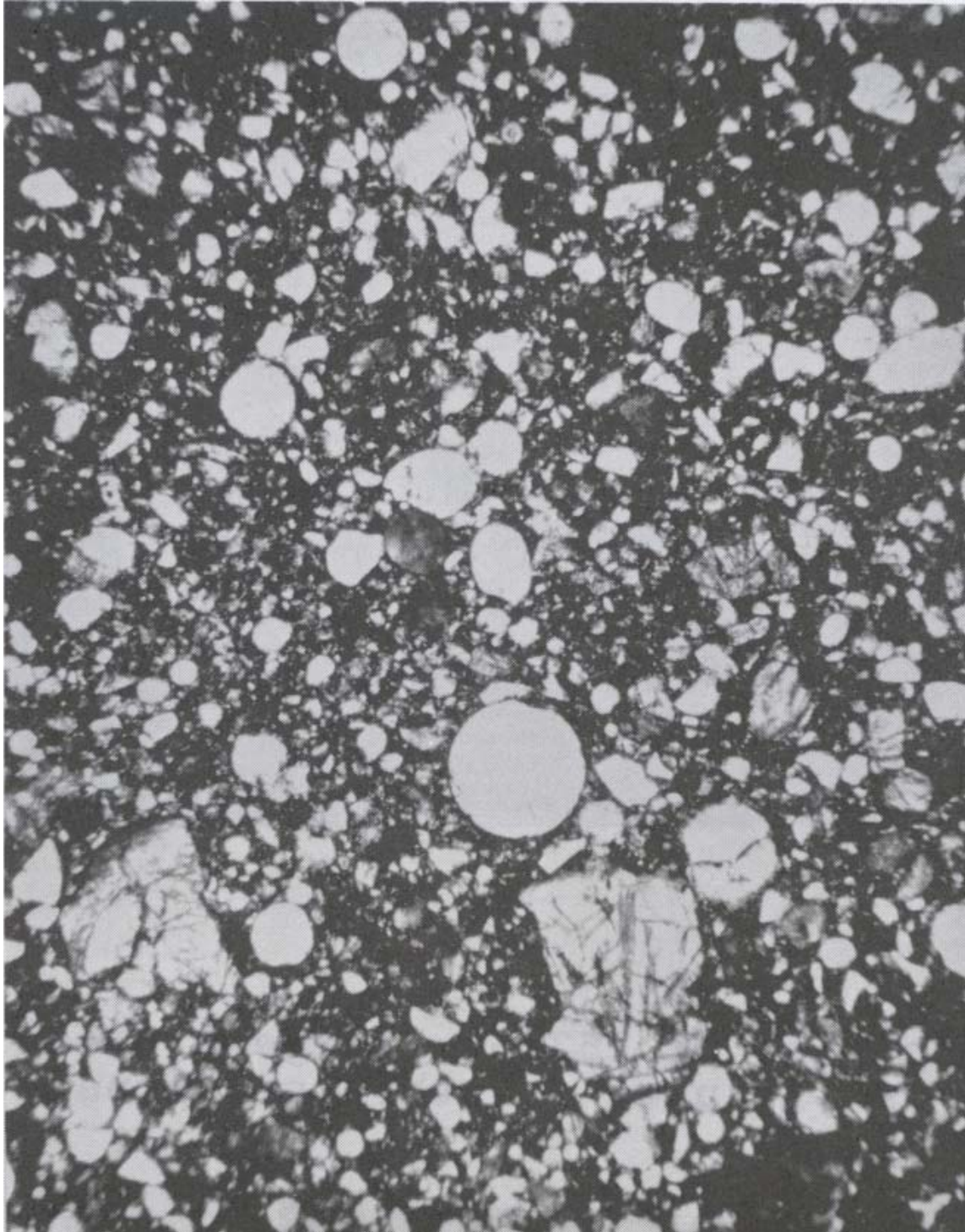


Figure 2. Photomicrograph of general matrix of 15326,6.
Transmitted light. Width about 2 mm.