

# 10094

Sample 10094 is a subangular to subrounded, medium dark grey, breccia. This sample was originally part of 10001,9, but was given a new generic number during re-examination. The sample was returned in ALSRC # 1003 (Bulk Sample container).

BINOCULAR DESCRIPTIONS BY: Twedell DATE: 9/19/76

ROCK TYPE: Breccia SAMPLE: 10044,59 WEIGHT: 25 gm

COLOR: Medium dark grey DIMENSIONS: 3 x 2.5 x 2.3

SHAPE: Subrounded - subangular

COHERENCE: Intergranular - coherent  
Fracturing - few penetrative, few non-penetrative.

FABRIC/TEXTURE: Anisotropic/Breccia.

VARIABILITY: Homogeneous

SURFACE: Irregular due to numerous fractures. Some small patches of patina on several surfaces.

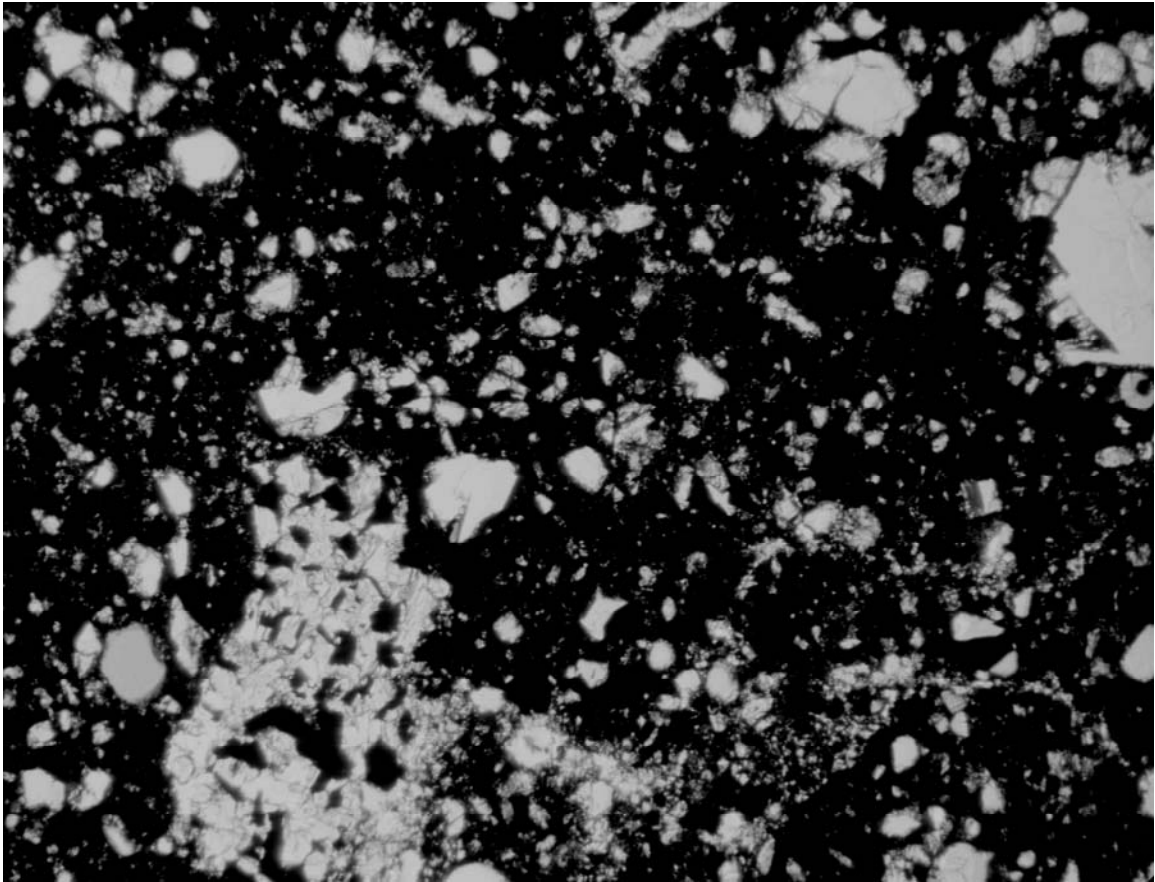
ZAP PITS: Many on S<sub>1</sub>, T<sub>1</sub>; few on E<sub>1</sub>, W<sub>1</sub>, and N<sub>1</sub>. None on B. Pits are glass lined up to 4 mm in diameter.

CAVITIES: Absent

<u>COMPONENT</u>	<u>COLOR</u>	<u>%OF ROCK</u>	<u>SHAPE</u>	<u>SIZE(MM) DOM. RANGE</u>	
Matrix	Med dk grey	97%			
Basalt clast	Brn Wht Blk	<1%	Angular	2	<1-6
Grey clast	Grey	1%	Subangular	1	<1-3
White clast	White	<1%	Angular	2	<1-8
Salt & Pepper Clast	Blk & white	1%	Angular	5	<1-11



10094,0 S-76-25993



SECTION: 10094,6 Width of field 1.39 mm plane light S-76-28122

THIN SECTION DESCRIPTION

BY: Walton

DATE: 7/16/76

SECTION: 10094,6

SUMMARY: Partly devitrified typical breccia with no large lithic clasts. Numerous small lithic clasts are present. Since the section is very small, the exclusion of large clasts may be a result of the sampling and be atypical for the rock.

MATRIX 69% OF ROCK

<u>PHASE</u>	<u>% OF SECTION</u>	<u>SHAPE</u>	<u>SIZE (MM)</u>	<u>COMMENTS</u>
Dark brown	100%	- -	<0.001	High glass content plus numerous crystallites.

MINERAL CLASTS 13% OF ROCK

<u>PHASE</u>	<u>RELATIVE ABUNDANCE</u>	<u>SHAPE</u>	<u>SIZE (MM)</u>
Pyroxene <sub>1</sub>	Very abundant	Angular to irregular	0.001-0.3
Plagioclase <sub>2</sub>	Moderate	Blocky to irregular	0.001-0.3
Opakes <sub>3</sub>	Few	Skeletal to blocky	0.001-0.1

- 1) Poor optical characteristics: some zooming.
- 2) Fair to good twins; few large pieces.
- 3) Most in clasts; numerous small fragment in matrix.

LITHIC CLASTS 13% OF ROCK

<u>TYPE</u>	<u>RELATIVE ABUNDANCE</u>	<u>SHAPE</u>	<u>SIZE(MM)</u>
Small	Very abundant	Rounded to irregular	0.001-1.0
Large	None	- -	>1.0

GLASS CLASTS 5% OF ROCK

<u>TYPE</u>	<u>RELATIVE ABUNDANCE</u>	<u>SHAPE</u>	<u>SIZE(MM)</u>
Yellow-Orange <sub>4</sub>	Very abundant	Spherical to angular	0.001-0.3
White <sub>5</sub>	Moderate	Angular to spherical	0.001-0o4

- 4) Almost all spheres or part spheres; some large angular shards.
- 5) Almost all angular shards; some spheres and part spheres; some devitrification.

## HISTORY AND PRESENT STATUS OF SAMPLES 7/16/76

10094 was part of 10001,9 (Bulk Sample generic processed in the Bio-prep. Upon re-examination in SSPL, it was assigned its own generic number and allocations were made for thin sections and chemical analysis.

### PRISTINE SAMPLES

0	24.23 gm	Rock. Pitted on all but one surface.
4	0.54 gm	Chips and fines.

### NO RETURNED SAMPLES