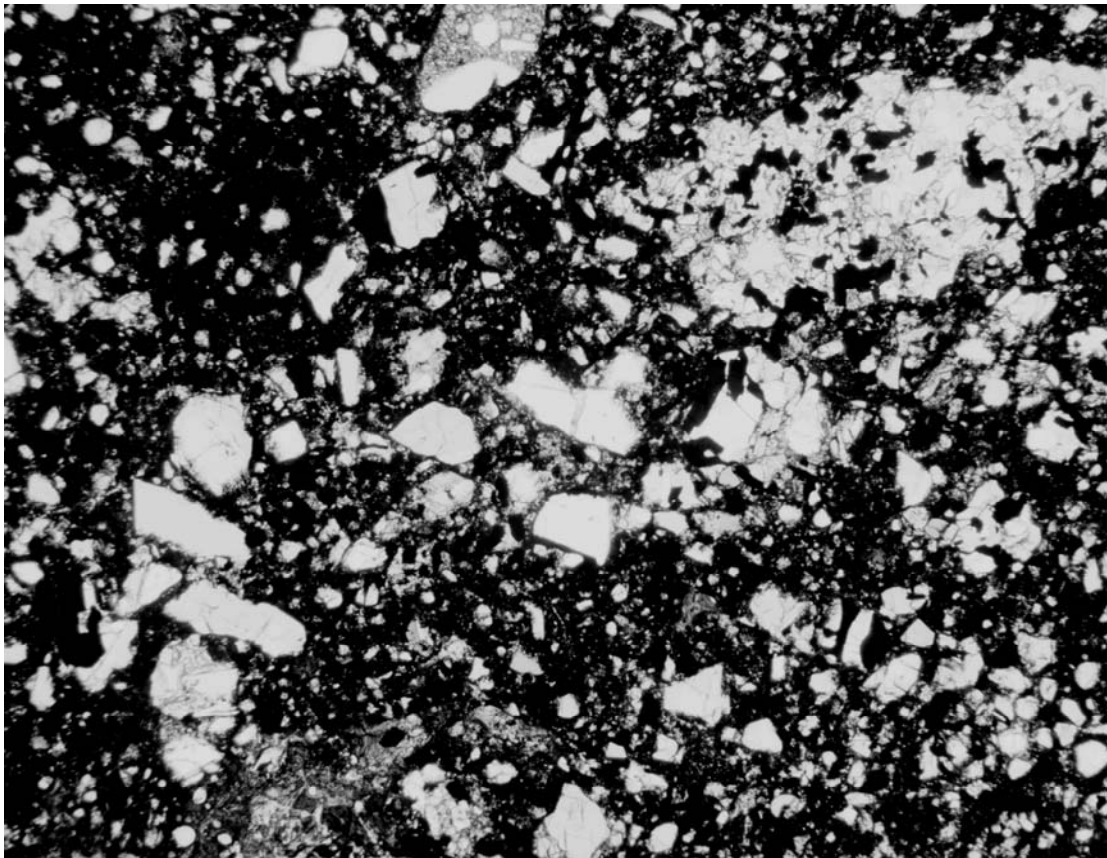




10082,1 S-76-20463



S-76-26284-

SECTION: 10082,8

Width of field 1.39mm plane light

THIN SECTION DESCRIPTION

BY: Walton

DATE: 6/29/76

SUMMARY: Partly devitrified typical breccia with no large lithic clasts. The section consists of only two small chips and is the only section available. Due to the small size of the chips, the larger clasts may have been excluded.

MATRIX 59% OF ROCK

<u>PHASE</u>	<u>% SECTION</u>	<u>SHAPE</u>	<u>SIZE(MM)</u>	<u>COMMENTS:</u>
Light to medium brown	100	---	<0.001	High glass content with many crystal fragments and crystallites.

MINERAL CLASTS 21% OF ROCK

<u>PHASE</u>	<u>RELATIVE ABUNDANCE</u>	<u>SHAPE</u>	<u>SIZE (MM)</u>
Pyroxene ₁	Very abundant	Angular to irregular	0.001-0.4
Plagioclase ₂	Few	Irregular to blocky	0.001-0.2
Opakes ₃	Moderate	Skeletal to blocky	0.001-0.2

- 1) Fractured; poor optical characteristics
- 2) Poor twinning; poor optics
- 3) Some large troilite; most skeletal ilmenite

LITHIC CLASTS 12% OF ROCK

<u>TYPE</u>	<u>RELATIVE ABUNDANCE</u>	<u>SHAPE</u>	<u>SIZE (MM)</u>
Small	Very abundant	Rounded to irregular	0.001-1.0
Large	None	----	>1.0

GLASS CLASTS 8% OF ROCK

<u>TYPE</u>	<u>RELATIVE ABUNDANCE</u>	<u>SHAPE</u>	<u>SIZE (MM)</u>
Yellow-Orange ₄	Very abundant	Spherical to angular	0.001-0.2
Greenish Yellow ₅	Two pieces	Blocky to irregular	0.4-0.5

- 4) Approximately half spheres and half shards; some devitrification.
- 5) Irregular piece hosting colorless glass masses; blocky piece with bubbles and some devitrification.

HISTORY AND PRESENT STATUS OF SAMPLES - 6/29/76

10082 was removed from the Documented Sample container (ALSRC #1004) and split in the Vac Lab. Remaining subsamples were re-examined in SSPL.

PRISTINE SAMPLES: (VAC-SSPL)

1	48.0 gm	Piece. Four pitted surfaces.
5	0.5 gm	Chips and fines.

NO RETURNED SAMPLES

NO CHEMICAL OR AGE DATES.