

10030

Sample 10030 is a subangular to sub-rounded, medium dark grey microbreccia. The sample originally weighed 2gm and measured 1.5 X 1.0 X 0.8cm. Sample was returned in the Contingency Sample Container.

BINOCULAR DESCRIPTION BY: Twedell DATE: 1-15-76

ROCK TYPE: Microbreccia SAMPLE: 10030,5 WEIGHT: 1.76 gm

COLOR: Medium dark grey DIMENSIONS: 1 x 1 x 0.8 cm

SHAPE: Subangular to subrounded

COHERENCE: Intergranular – coherent
Fracturing – absent

FABRIC/TEXTURE: Anisotropic/Microbreccia

VARIABILITY: Homogeneous

SURFACE: Smooth on T₁-S₁, irregular on all others.

ZAP PITS: Few on T₁. None on any others. Pits are glass lined, <1mm in diameter.

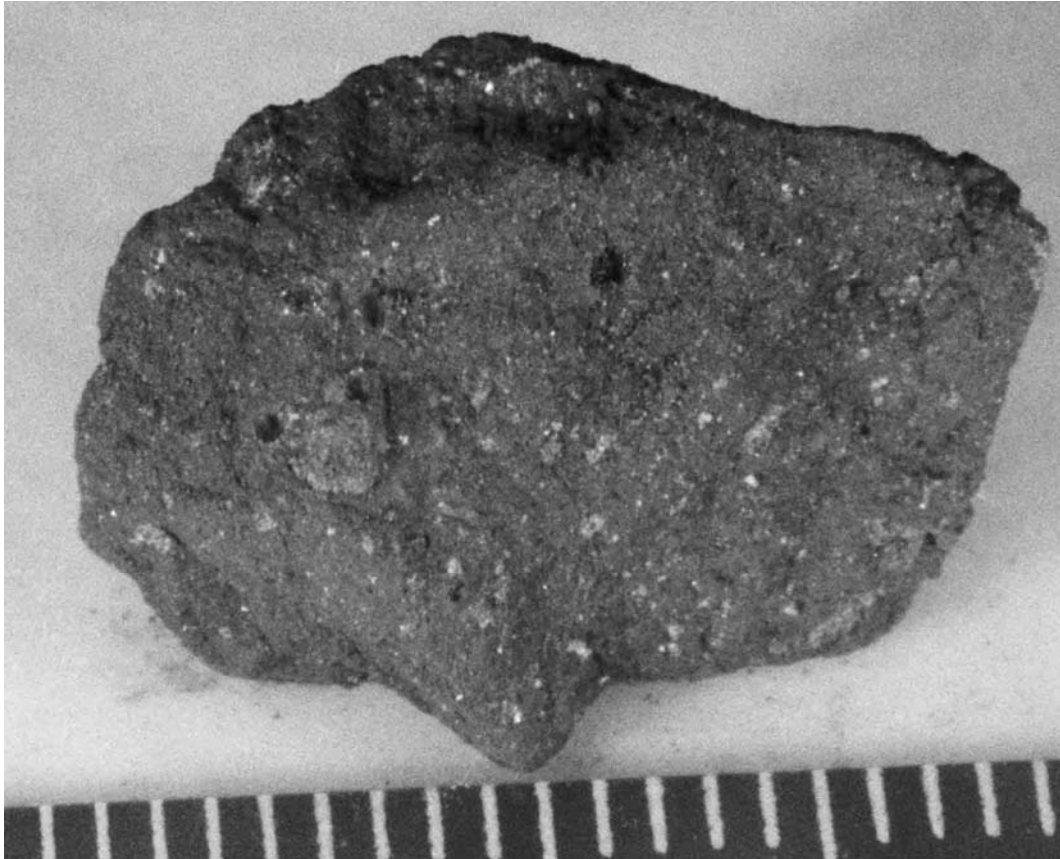
CAVITIES: Absent

COMPONENT	COLOR	% OF ROCK	SHAPE	SIZE (MM)	
				DOM.	RANGE
Matrix	Med.Dk.Grey	99%	-----	-----	-----
Grey & White Clast ₁	Grey/White	<1%	Subangular to sub-rounded	0.5	<1.0
Basalt Clast	Black/White and brown	1%	Angular	0.7	<1.2
Salt & Pepper Clast	Black/White	<1%	Angular	0.5	<1.0

1) Texture is aphanitic. Even distribution of dark and light minerals.

THIN SECTION DESCRIPTION

There were no thin sections for the generic 10030 at the onset of re-examination. Due to the small size of the total generic (1.76g), it was judged unwise to remove a chip for thin sections.



10030,0 (S-69-46057) Original PET Photo



10030,5 (S-76-21142)

10030

HISTORY AND PRESENT STATUS OF SAMPLES – 6/28/76

10030 was removed from the Contingency Sample bag and processed in PCTL. The only remaining pristine sample was re-examined in SSPL.

PRISTINE SAMPLES:

5 1.76 gm Chip. One lightly pitted surface. PCTL-SSPL

NO RETURNED SAMPLES:

NO CHEMICAL ANALYSES

NO AGE DATES